



**A CLEAR OPPORTUNITY FOR  
THE DISCOVERY & MINING OF  
QUEBEC NICKEL AND MINERALS  
FOR THE PRODUCTION OF  
ELECTRIC VEHICLE BATTERIES**

**GABOURY PROJECT  
113N PROJECT**

# CAUTIONARY STATEMENT

## CAUTIONARY STATEMENT REGARDING FORWARD-LOOKING INFORMATION

Except for historical information certain statements included in this presentation are forward-looking statements within the meaning of Canadian securities laws. Such statements may include words such as “Anticipates”, “schedule”, “projects”, “plans”, “targets”, “programs”, “continues”, “estimates”, “could”, “should”, “would” or “will”. Forward-looking statements made in this presentation involve significant risks and uncertainties. These risks and uncertainties include the inherent risks involved in the exploration and development of mineral properties. the uncertainties involved in interpreting drilling results and other geological data. fluctuating metal prices. the possibility of project cost overruns or unanticipated costs and expenses. uncertainties relating to the availability and costs of financing needed in the future. and other factors. The Corporation disclaims any intention or obligation to update forward-looking statements if circumstances or management’s estimates or opinions should change. The reader is cautioned not to place undue reliance on forward-looking statements.





**Mosaic's focus is on  
the discovery and  
mining of Nickel &  
Copper For Use in  
Electric Vehicle  
Batteries**

**Obtained permits for its  
1st drilling program at  
the Gaboury project  
located 150 km SW of  
Rouyn-Noranda, in  
Abitibi, Québec**



# STOCK INFORMATION AND CAPITAL STRUCTURE

**As of August 23, 2021**

Common Shares Outstanding : 42,678,500

Warrants : 10,245,500

Options: 2,950,000

Balance: 55,874,000

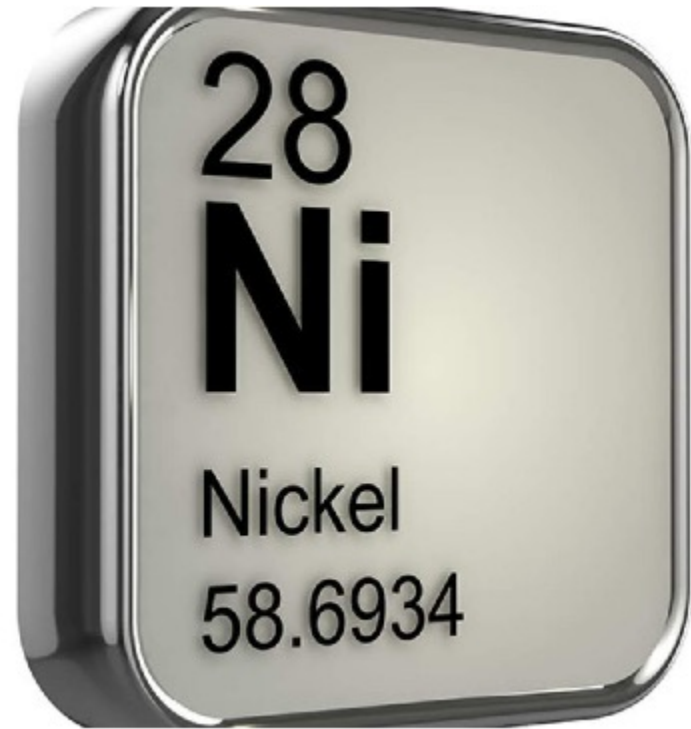


# Nickel Highlights



- Nickel is one of the most versatile metals found on earth
- Nickel is tough, corrosion resistant, hygienic and 100% recyclable.
- Nickel packs more energy into batteries and allows producers to reduce use of cobalt, which is more expensive and has a less transparent supply chain
- Elon Musk has previously pleaded with miners to produce more nickel. Supplies will be tight for the next three years, and there could be a significant deficit as early as 2023 as demand picks up, according to BloombergNEF analyst A. R. Restauero.
- Nickel has rallied 16% this year on the London Metal Exchange amid a broad-based rally in commodities, with investors betting on strong demand growth

# Nickel Highlights



- Nickel is a key component in lithium-ion batteries used in EV's and provide higher energy density at a lower cost.
- BHP Group agreed to buy Noront Resources Ltd. In July 2021 to add a nickel project in Canada putting a greater emphasis on nickel and copper to support the green revolution
- As the electric vehicle (EV) market continues to grow, renewable energy and minerals associated to it such as nickel, copper, and cobalt, are increasing in price
- The global electric vehicle market size is projected to grow at a CAGR of 26.8% from 2021 – 2030
- According to Technavio, incremental growth of USD 37.69 billion is expected in the electric vehicle (EV) battery market during 2021-2025.
- According to INN, nickel companies have done exceptionally well, with their share prices seeing major increases over the course of 2021 so far.

# Gaboury & 113N Project Highlights

## Gaboury Project



**The Gaboury Project** is composed of 82 mining claim cells totalling 4,282 hectares located approximately 150 km SW of the Rouyn Noranda mining camp and easily accessible by paved and gravel roads and 11 km East of former Loraine Mine that produced 600,000 tonnes of ore grading 0.47% Ni and 1.08% Cu (Source: SIGEOM GM 43679).

Nickel, Copper & Gold occurrences were discovered in this geological environment near the project. **The company plans to carry out a diamond drilling program of approximately 2,500m during the current year on this project.**

## 113 North Project



**The 113North Project** is located in the southeastern part of the Abitibi greenstone belt and is comprised of 59 claims totalling 3010 ha within a 6- to 12-kilometer-wide band made up of volcano-sedimentary rocks located between the granodiorite-tonalite batholiths of Josselin and Montgay.

Gold, copper, nickel, platinum and palladium showings were discovered in this geological environment near the project. **The company plans to carry out a diamond drilling program of approximately 2,500 m during the current year on this project.**



# Gaboury Project Planned Work

## Gaboury Project



## Phase 1 - Fall 2021

- Obtained all the necessary permits to undertake a first drilling program on its Gaboury project
- A first prospecting survey made it possible to trace in the western extension of the Pike Nickel showing, a few significant nickel anomalies as well as copper, zinc, and silver anomalies in the eastern extension of the same showing.
- 7 drill hole program is scheduled in Fall 2021
- GA-P-01 to verify the Ni mineralization 100m below hole GA-10-08 and test InfiniTEM conductor.
- GA-P-02 and 08 to test the IP anomalies and cross-section the favorable lithologies for Ni.
- GA-P-03, 04 and 05 to verify the favorable lithologies identified by a magnetic high.
- GA-P-06 and 07 to verify the lateral extensions identified by INPUT conductors and high mag.

# GABOURY PROJECT LOCATION MAP

- 130 km from Rouyn-Noranda mining district.
- Easily accessible through provincial and regional all-year roads.
- Good network of logging roads within the property
- Infrastructure, power grid and workforce readily available.
- Quebec is a mining-friendly jurisdiction
- 82 claims for 4,282 ha
- In excess of 1.4M\$ of work credits on the claims.



Lambert project: Na083; 10/2009 G:\GIS\Gaboury\PropertyAndClaims\ArcGIS\Gaboury GenLocMap.mxd

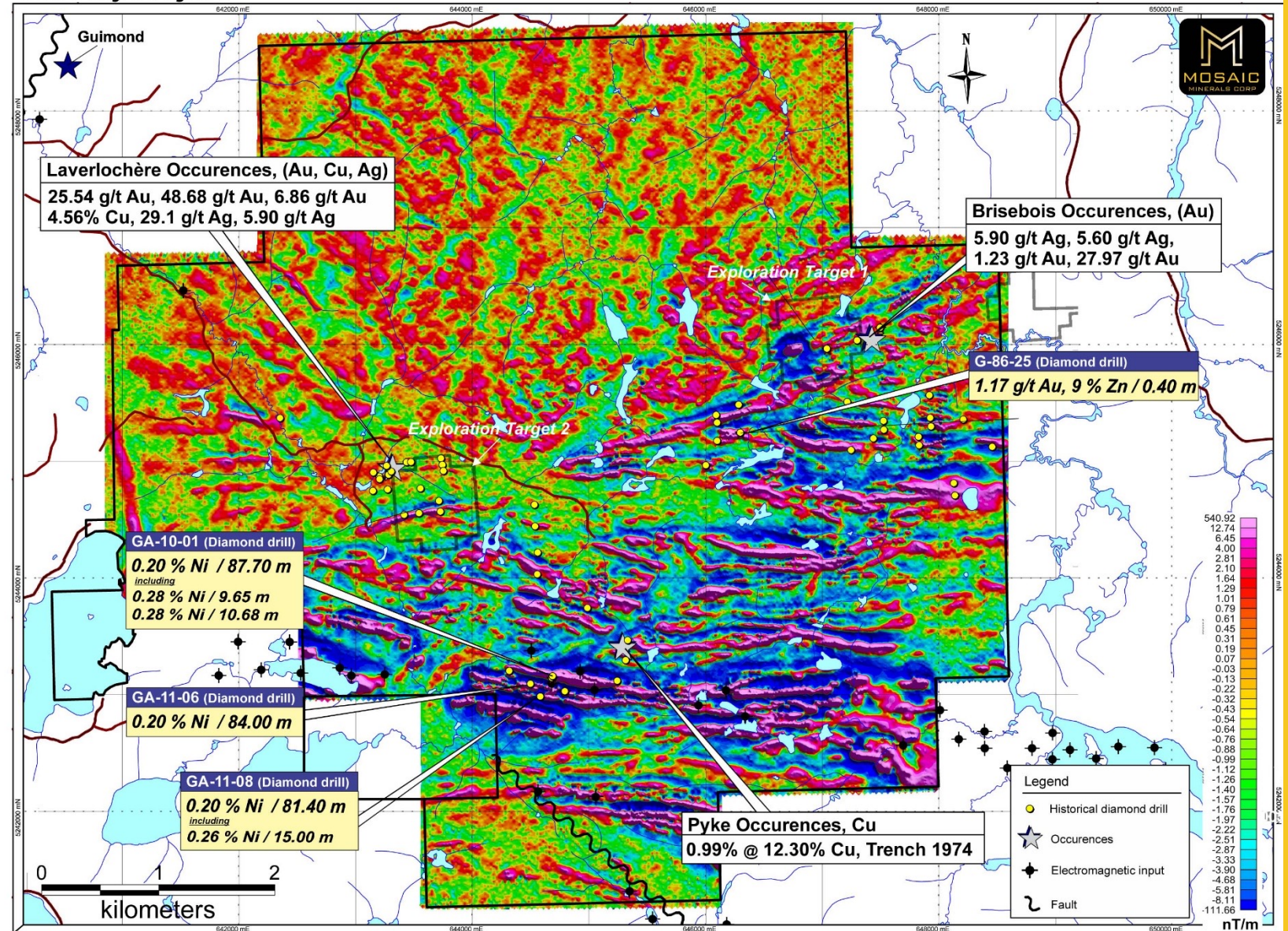
**GABOURY PROJECT  
GENERAL LOCATION MAP**



# GABOURY PROJECT METAL OCCURENCES

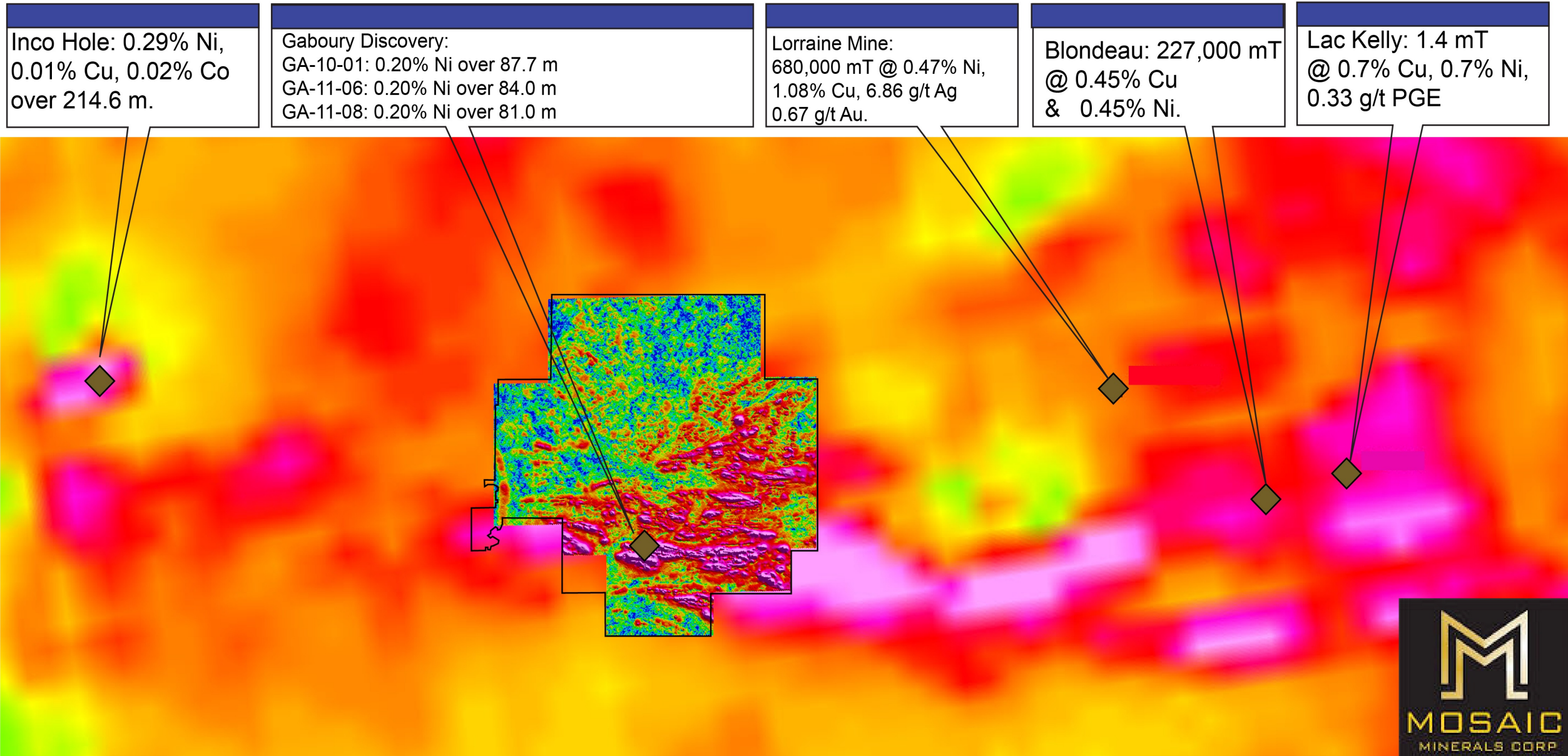
- In 2010-11, 3 holes by Fieldex intersected extensive Ni mineralization in ultramafic intrusions.
- The property is highly prospective for Ni-PGE magmatic deposits.
- INPUT electromagnetic conductors present on each side of the discovery.
- 5 km. of prospective lithologies for base metals.
- Off-hole InfiniTEM conductor in hole GA-11-06 not properly drilled.

## Gaboury Project





# Nickel showings in the immediate vicinity of the Gaboury property.





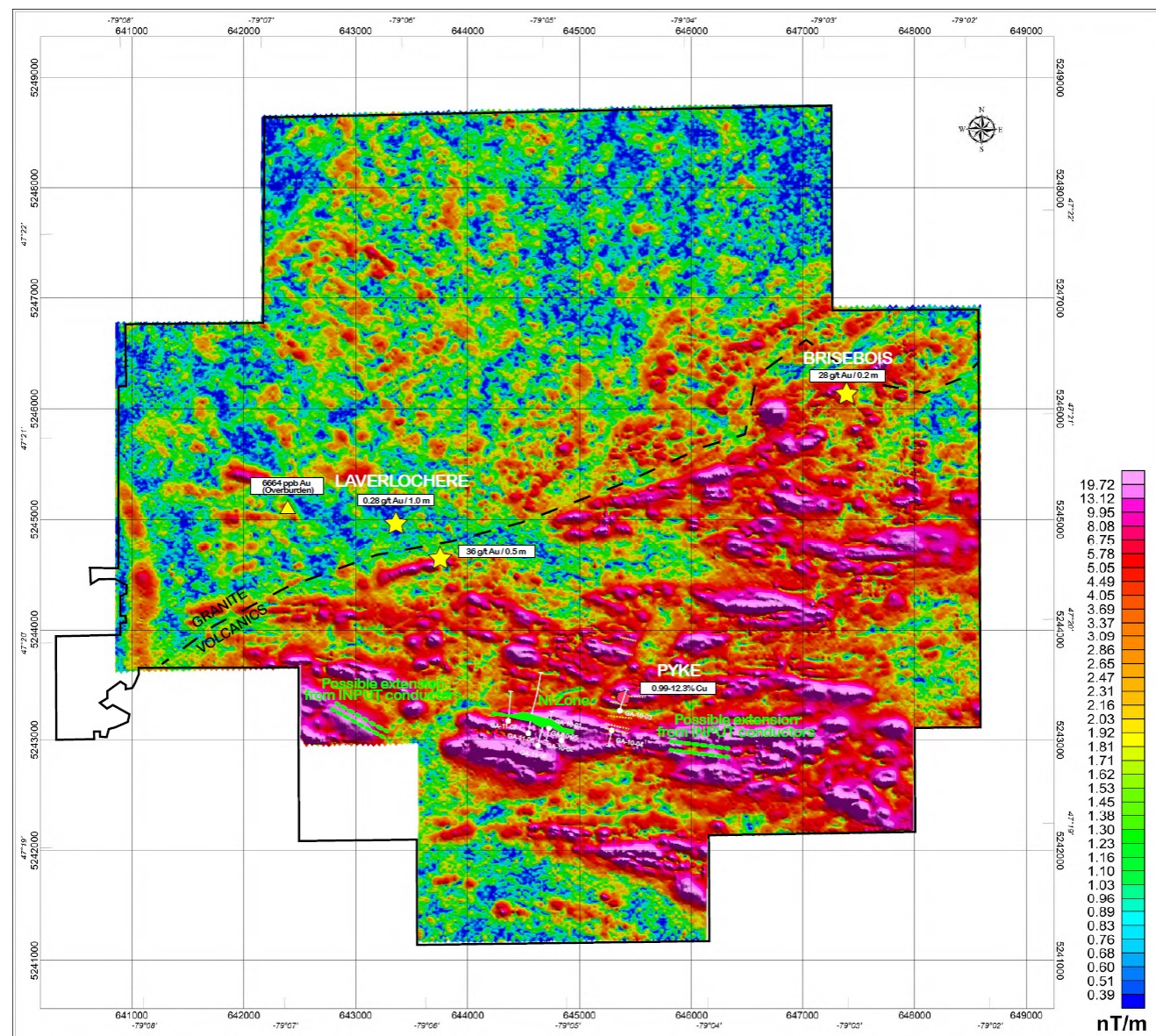
- Mag – HEM surveys in 2010 outlined a strong HEM conductors coupled with a high mag anomaly.
- IP survey identified numerous anomalies, only 2 anomalies drilled.
- Numerous anomalous Cu samples found by prospecting.





# GABOURY PROJECT PROPOSED 2021 DRILL PROGRAM

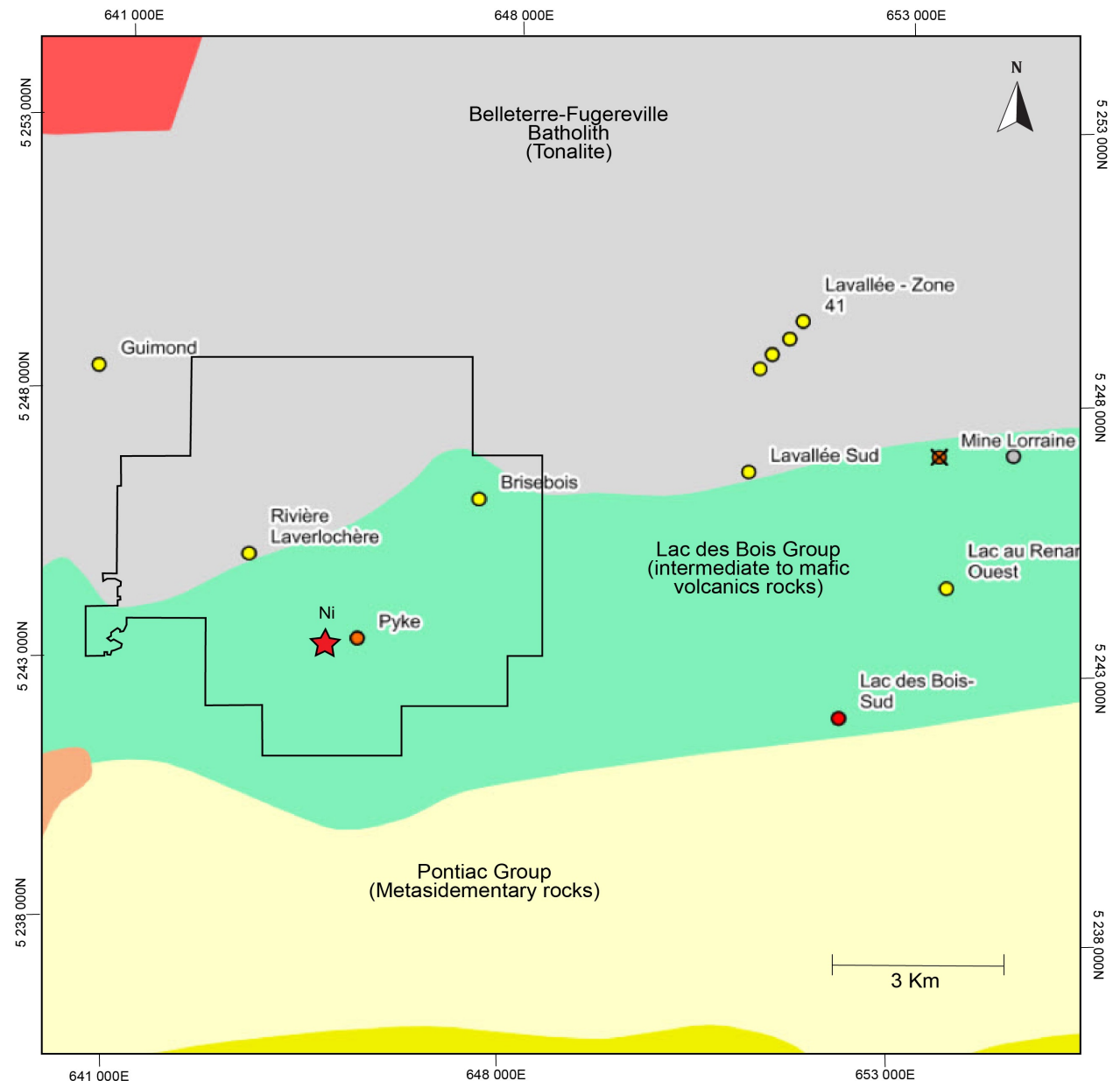
- 7 drill holes program
- GA-P-01 to verify the Ni mineralization 100m below hole GA-10-08 and test InfiniTEM conductor.
- GA-P-02 and 08 to test the IP anomalies and cross-section the favorable lithologies for Ni.
- GA-P-03, 04 and 05 to verify the favorable lithologies identified by a magnetic high.
- GA-P-06 and 07 to verify the lateral extensions identified by INPUT conductors and high mag.





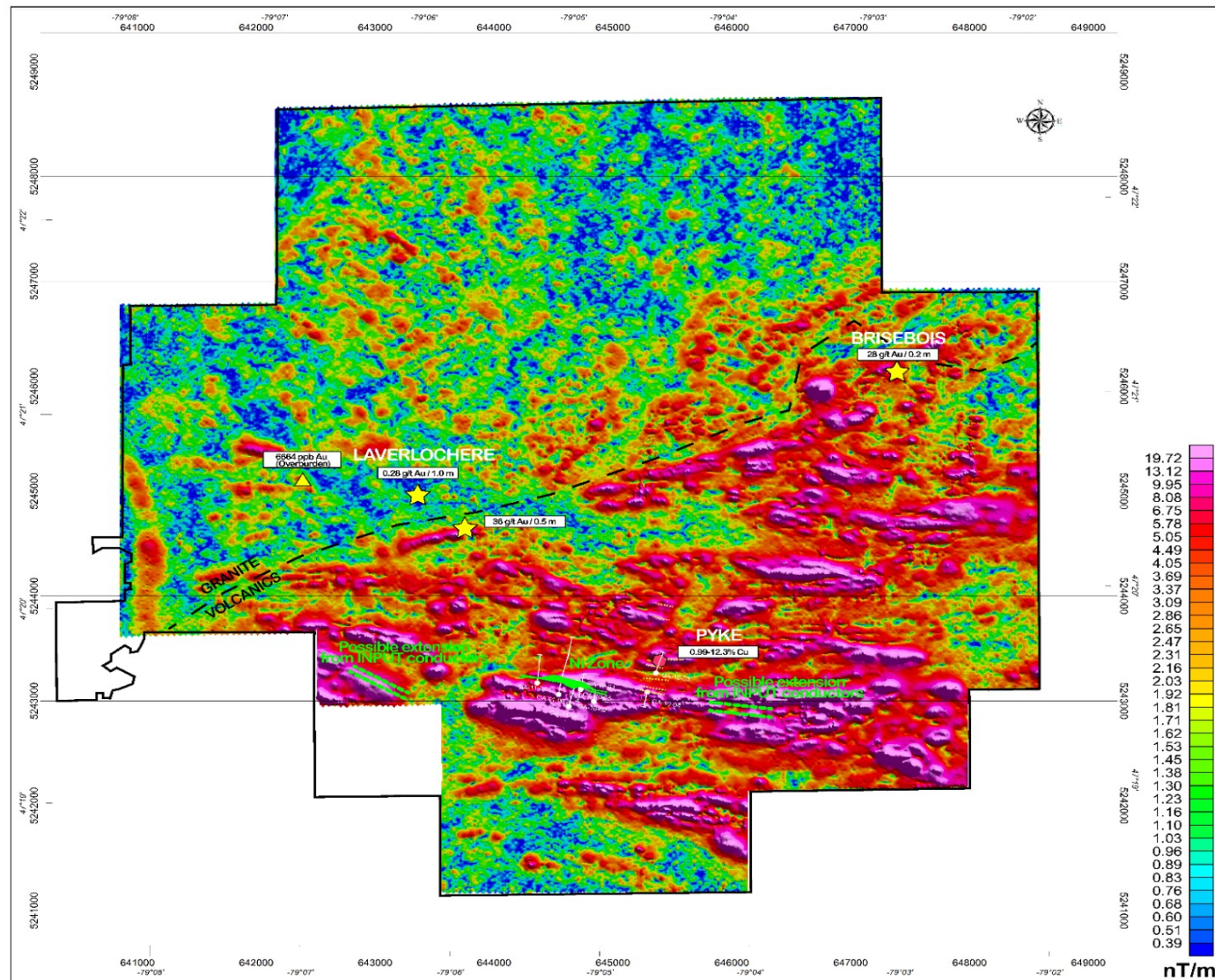
# GABOURY PROJECT GEOLOGY MAP

- 3 distinct geological formations on the property
  - Belleterre-Fugereville Batholith
  - Lac des Bois Group (volcanics)
  - Pontiac Metasediments
- Volcanic rocks with its ultramafic intrusions are favorable for base metals deposits
- Lorraine mine produced 594,000 tonnes at 1.07% Cu and 0.45% Ni.
- Ni mineralization discovered by drilling HEM conductors.
- Mineralization found in gabbro/peridotite ultramafic intrusions.
- Highly favorable for magmatic deposits (Ni – PGE)
- Pyke showing : up 12.30 % Cu in grab samples



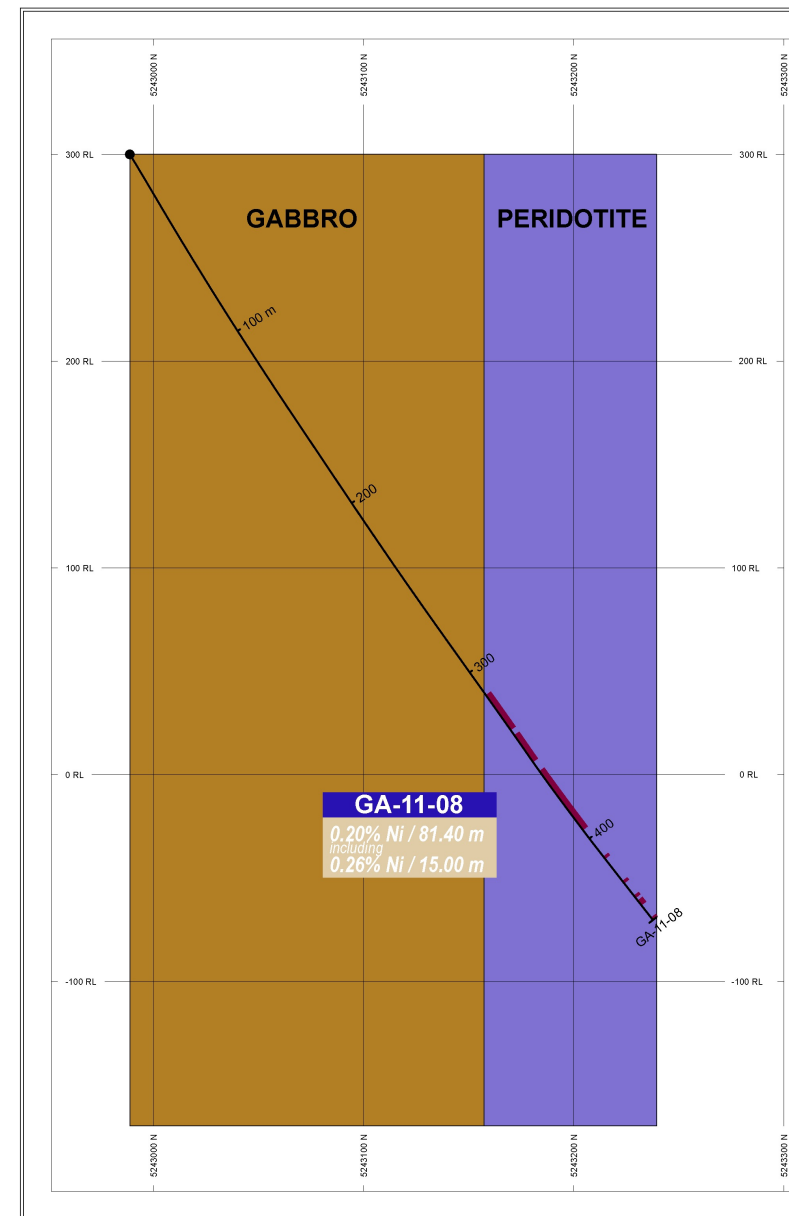
# GABOURY PROJECT NICKEL DISCOVERY

- Recent high-resolution aeromagnetic survey flown over the entire property.
- Ni discovery (in green) within a distinct package of highly magnetic rocks.
- Possible extensions on both sides of the Ni discovery.
- 3 IP anomalies not drilled.



# GABOURY PROJECT CROSS-SECTION THROUGH NICKEL DISCOVERY

- Ni mineralization is found at the contact with a gabbro and a peridotite (ultramafic) intrusion.
- Consistent with the magmatic deposit model where Ni occurs at the base of the intrusion.





# 113N PROJECT

**A High-resolution aeromagnetic survey recently showed the presence of four prospective areas showing Gold, Copper, Nickel, Platinum and Palladium.**

- 110 km from Val d'Or mining district.
- Provincial road cuts through the property.
- Infrastructure, power grid and workforce readily available.
- Quebec is a mining-friendly jurisdiction
- 59 claims for 3,108 ha

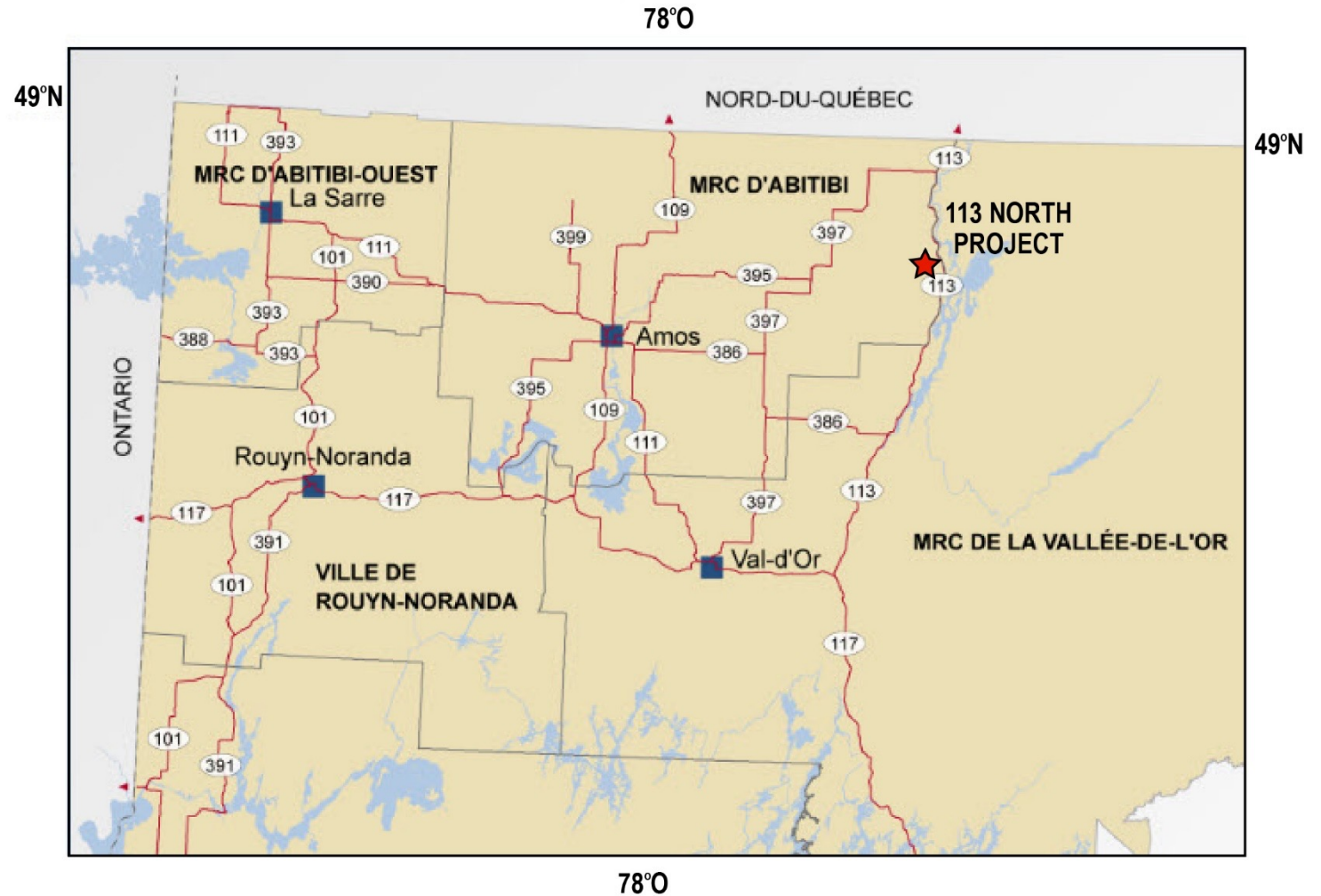
The 113North project is located in the southeastern part of the Abitibi Greenstone belt and is comprised of 59 claims totalling 3010 hectares within a 6- to 12-kilometer-wide band made up of volcano-sedimentary rocks located between the granodiorite-tonalite batholiths of Josselin and Montgay. The volcanic rocks of this group exhibit felsic, intermediate and mafic compositions and are intersected by dunite, gabbro and diorite dykes. Iron formations (sulphides and oxides) and clastic sedimentary rocks, such as greywackes and shales, are also present.

Gold, copper, nickel, platinum and palladium showings were discovered in this geological environment near the project.

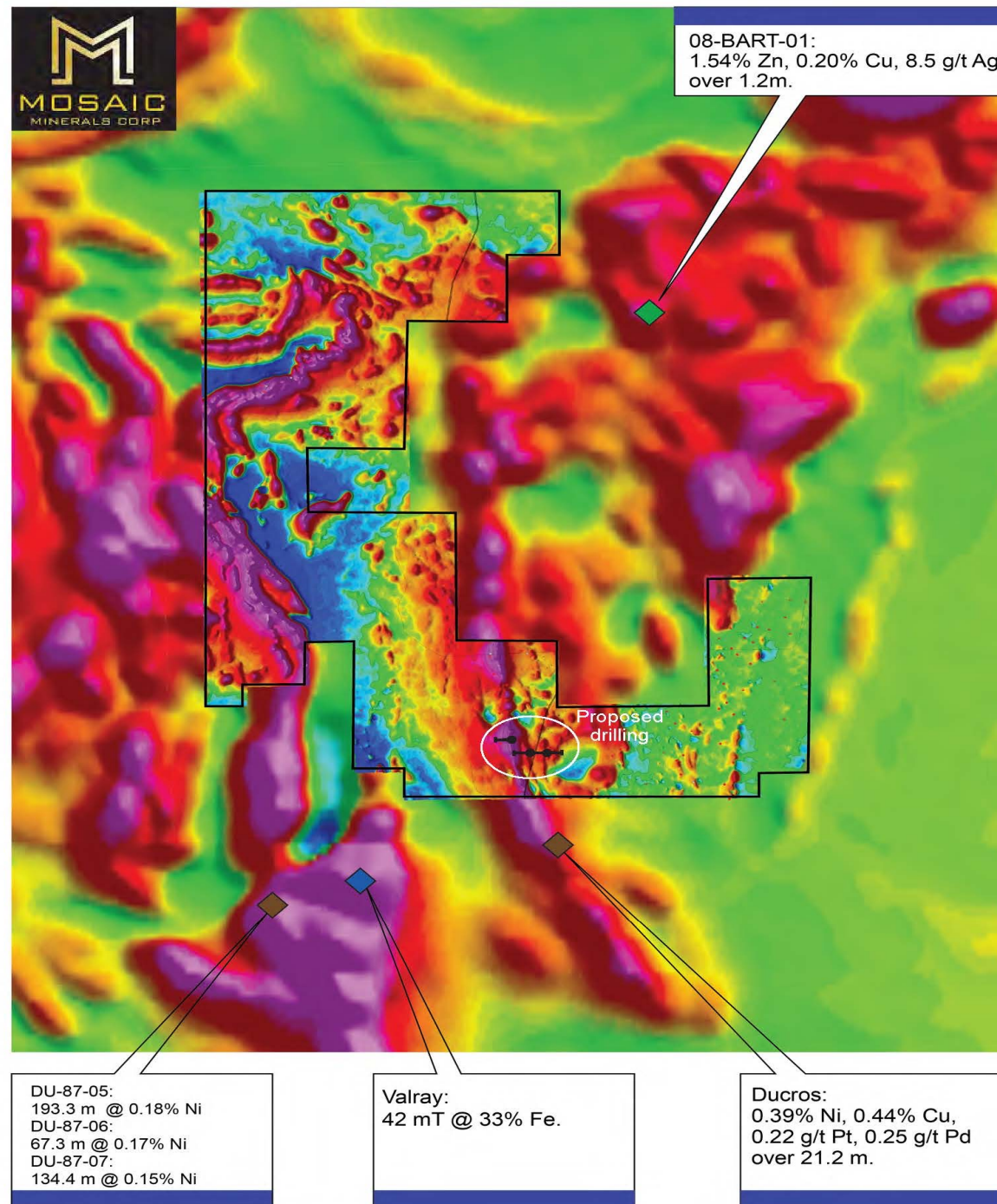
**The company plans to carry out a diamond drilling program of approximately 2,500 m during the current year on this project.**

# 113N PROJECT LOCATION MAP

- 110 km from Val d'Or mining district.
- Provincial road cuts through the property.
- Infrastructure, power grid and workforce readily available.
- Quebec is a mining-friendly jurisdiction
- 59 claims for 3,108 ha



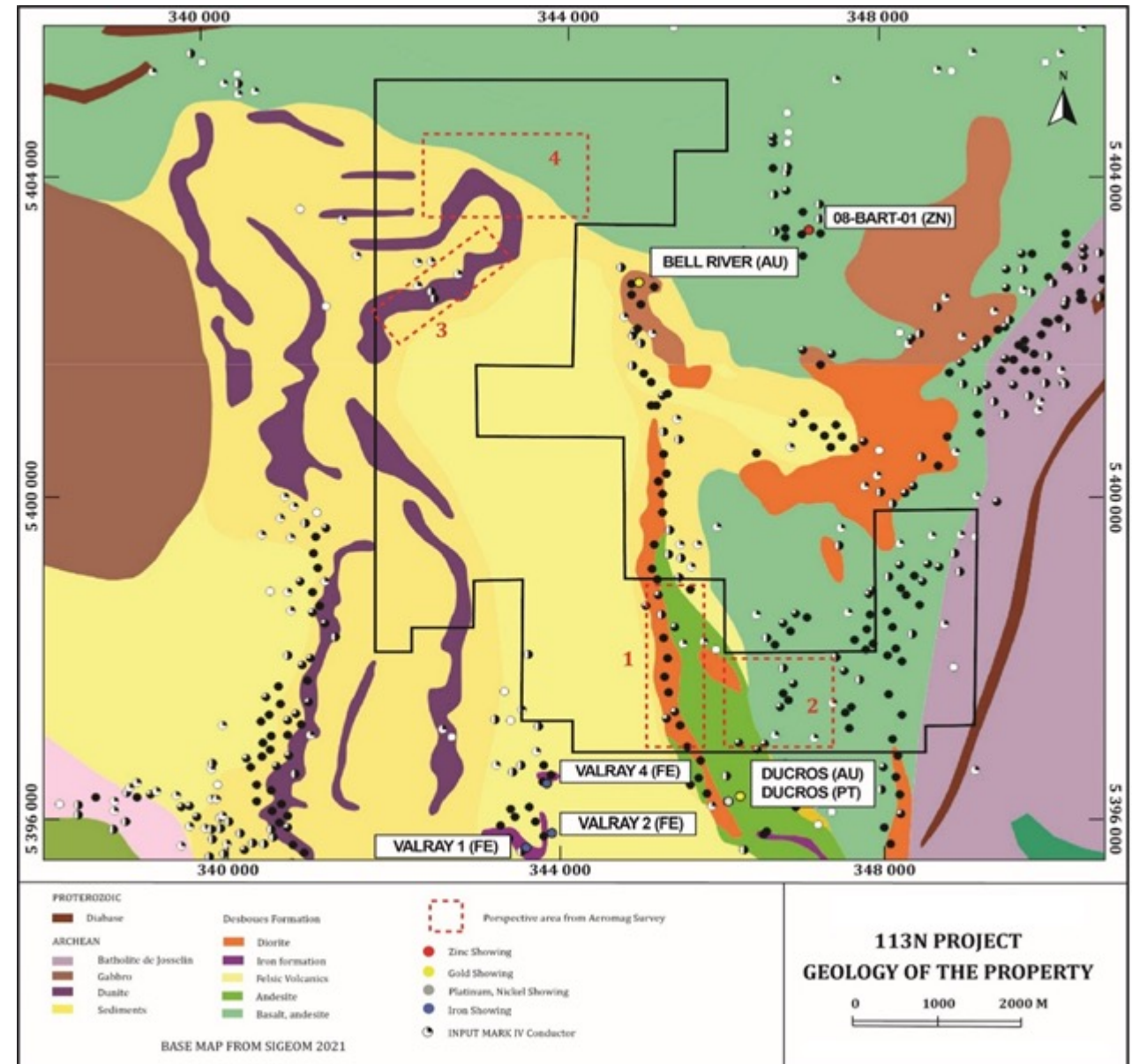
Nickel and Gold occurrences in the immediate vicinity of the 113 N Property.





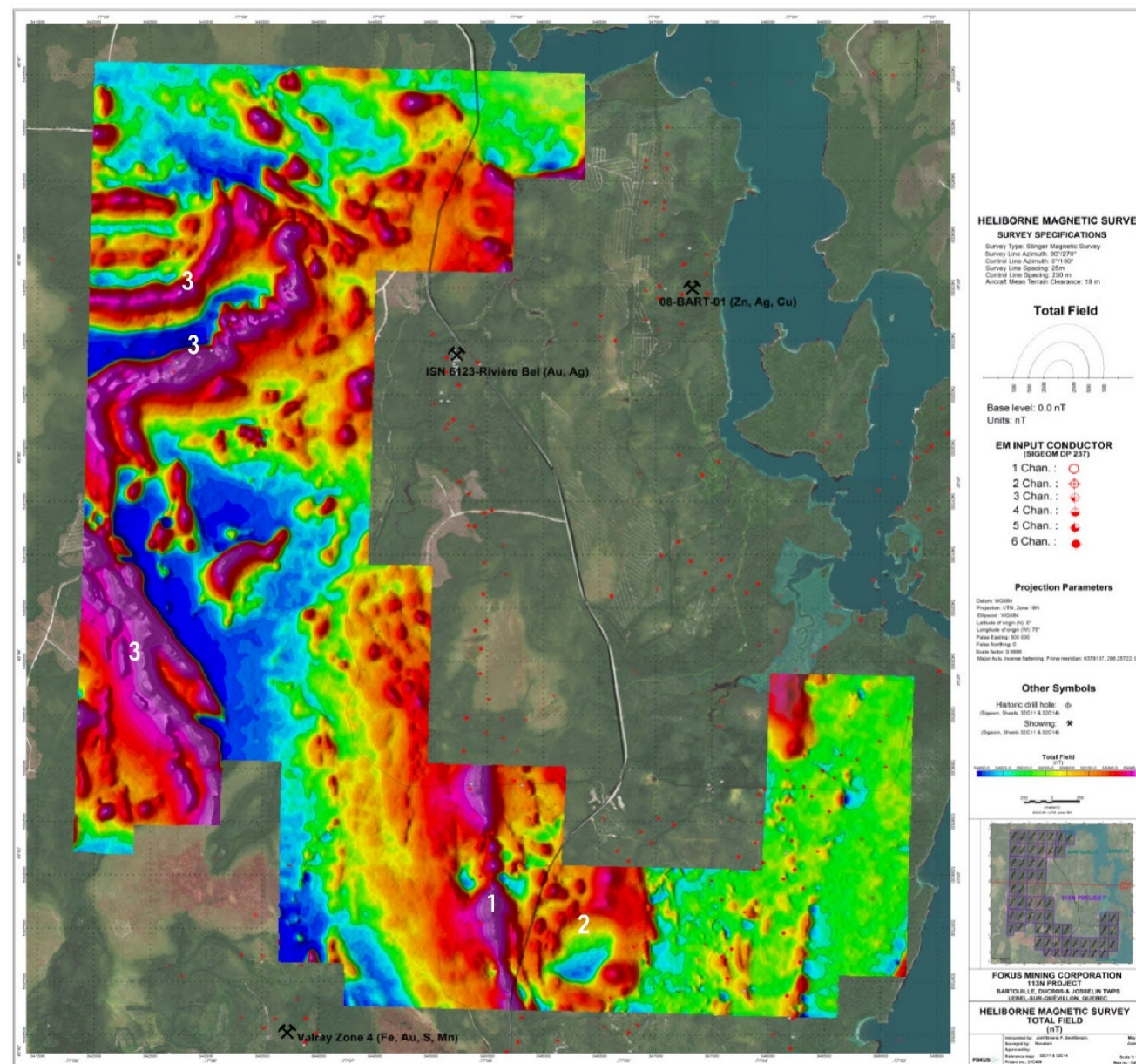
# 113N PROJECT GEOLOGY MAP

- Property is underlain by felsic to mafic volcanic rocks and volcano-sedimentary rocks.
- Intruded by mafic to ultramafic gabbro, peridotite and dunite.
- Prospective for Ni-PGE magmatic deposits
- Ducros showing (400 m south):
  - 0.44% Cu, 0.37% Ni, 0.25 g/t Pt, 0.23 g/t Pd over 21.2 m
  - Peridotite intrusion with INPUT conductors.
  - Prospective area from aeromagnetic survey
  - Favorable geology trends onto the property
- Valray Iron Formation
  - Sulphide- and oxide-facies Algoma type Iron Formations
  - 42mT @ 33% Fe
  - In contact with talcose dunite intrusive.
- Bart base metals showing
  - 1.54% Zn, 0.2% Cu and 8.5 g / t Ag over 1.2 m
  - Found in graphitic sediments in a larger volcano-sedimentary sequence



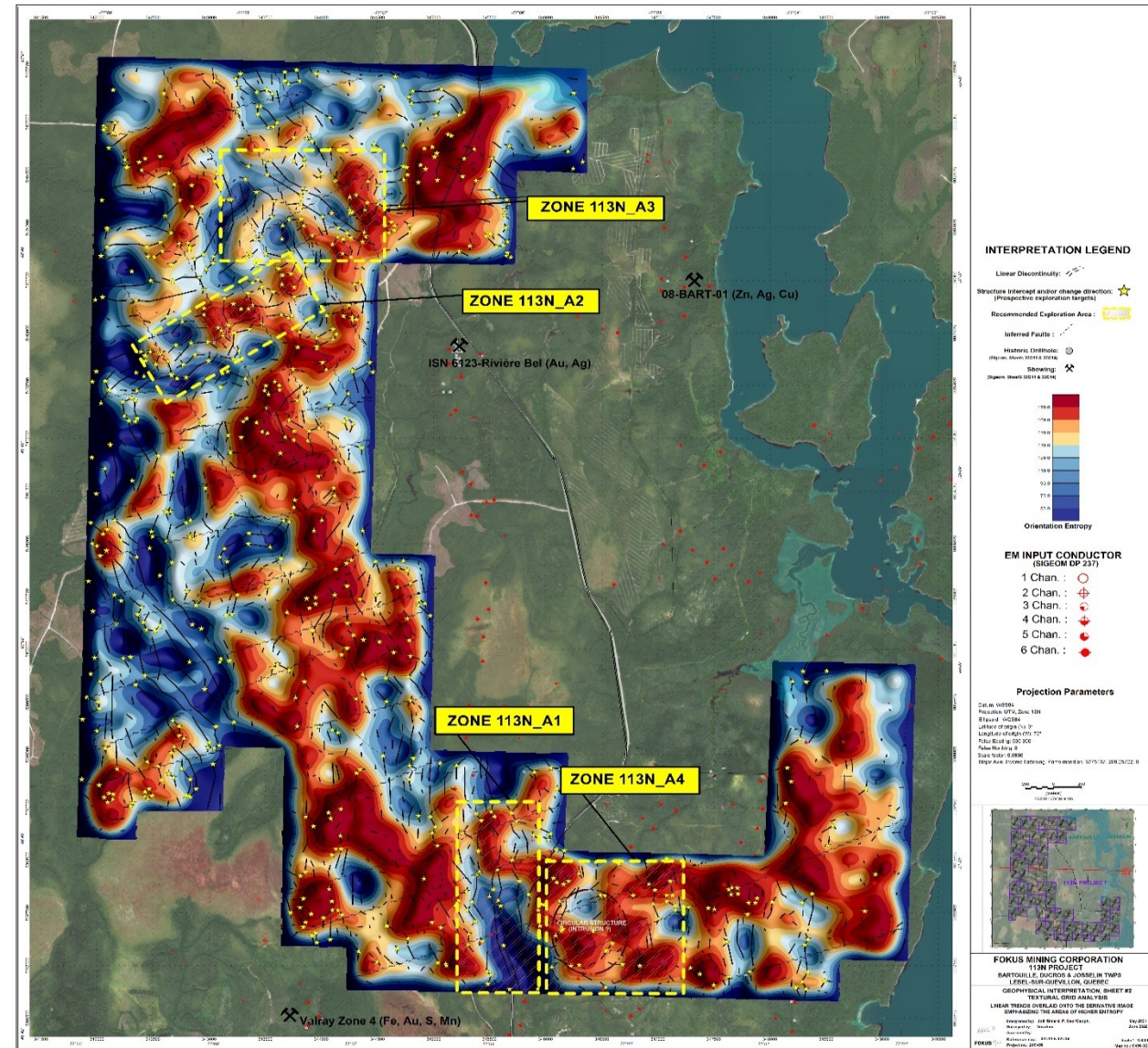
# 113N PROJECT AEROMAGNETIC MAP

- Spring 2021 high-resolution airborne magnetic survey.
- Continuous data readings acquired on 25m line-spacing.
- 1: Diorite-peridotite intrusions host of the Ducros Ni-Cu-Pt-Pd showing 400 m south of the property.
- 2: Circular intrusion of unknown nature
- 3: Dunite intrusions prospective for Ni-PGE magmatic deposits



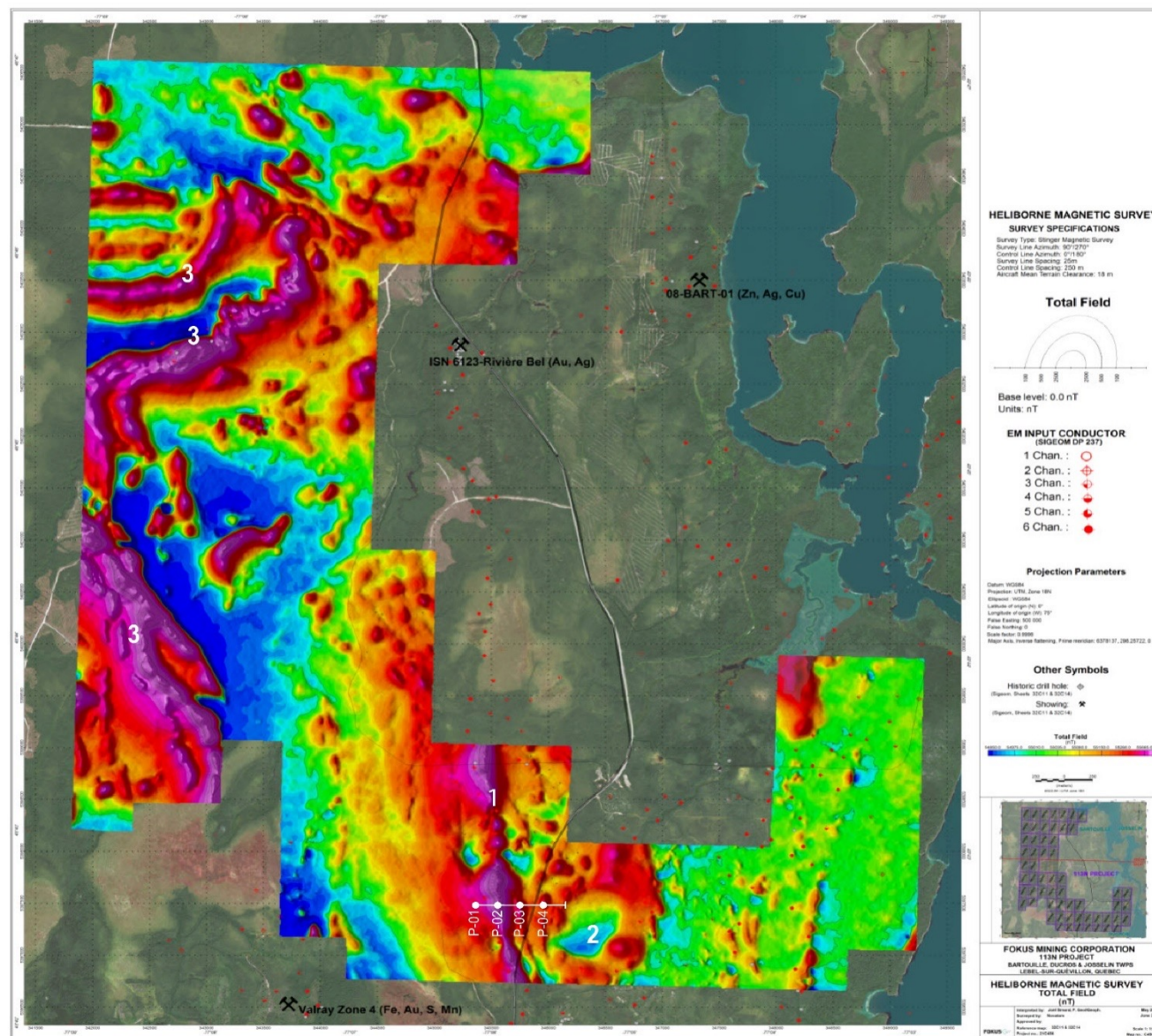


- Entropy map from the aeromagnetic survey.
- Higher entropy areas significant of changes of the structural grain which is favorable for deposits.
- 4 higher entropy areas outlined from the survey.
- Coincidence with favorable geology:
  - Zone 113N\_A1: Diorite-peridotite Ducros showing type of mineralization
  - Zone 113N\_A2 & A3: Dunite intrusion favorable for magmatic Ni-PGE deposits.
  - Zone 113N\_A4: unexplored circular intrusion





- 1200 m. in 4 DDH to cover 840 m. of favorable stratigraphy.
- Test INPUT conductors at or near contact between felsic volcanic rocks and diorite intrusion.
- Test the presence of Ni-PGE mineralized peridotite similar to the Ducros occurrence.





# MANAGEMENT



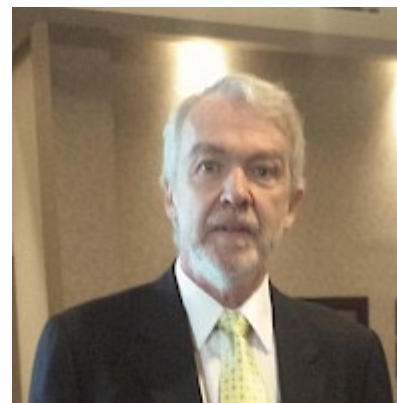
**Jonathan Hamel**  
President & Chief Executive Officer

Mr Hamel is President and CEO of Bullion Gold Resources Corporation (TSX-V : BFD). He was a director at Vanstar from 2018 to 2021, Secretary of the Board since 2020 and acted as Interim President and CEO during management transition in 2020. In addition to his 20 years of management experience that has taken him around the world, Mr. Hamel sat on the Board of Directors at the Montreal Economic Institute, a globally recognized independent public policy think tank focused on proposing reforms based on market principles and entrepreneurship and acted as Guest Lecturer at École des dirigeants – HEC Montréal. Mr Hamel served on the Financial Innovation Committee of L'Autorité des Marchés Financiers (Québec) from January 2017 to December 2020.



**Martin Nicoletti, CPA, CGA**  
Chief Financial Officer

Mr Nicoletti is a chartered professional accountant (CPA) with more than 32 years of experience. He holds a bachelor's degree in business administration, accounting specialization. Mr. Nicoletti is also president of Corporation Financière SKTM Ltée and chief financial officer of several other mining companies.



**Gilles Laverdière, P. Geo.**  
Qualified Person under NI 43-101

Gilles Laverdière is a consulting geologist to exploration mining companies, since 2013. From 2011 to 2013, he was senior consulting geologist for Merrex Gold Inc. where he was in charge in developing a gold project in Mali within a joint-venture with lamgold Inc. From 2006 to 2010, he was a consulting geologist in charge of planning and supervising drilling projects in Northwestern Quebec and writing 43-101 geological reports. From 1998 to 2006, he was CEO of HMZ Metals Inc. where he acquired mining assets in China and listed the Company through an IPO on the TSX. From 1985 to 1997, he has been part of senior management and on the Board of many public mining companies where he evaluated mining prospects, negotiated and structured financing for various mining companies in Canada, the Philippines, Brazil, Nevada. From 1978 to 1984, he was a geologist with a focus on gold exploration in Northwestern Quebec

# BOARD OF DIRECTORS



**Luc Gervais, Eng.**  
**Director**

Mr Gervais holds a mining engineering degree from Laval University and is a member of the Ordre des Ingénieurs du Québec (OIQ). M. Gervais has 35 years of experience in engineering, construction and maintenance in the mining and metallurgy sectors and has held several management positions in metallurgy departments for different producers. He has led studies for numerous mining companies and worked on various projects in Canada and abroad. In addition, he currently sits on the board of Vanstar Mining Resources, a Quebec-based junior exploration company.



**Eric Beauchesne**  
**Director**

Mr Beauchesne holds a Master in Business Administration (MBA) with a mining specialization. He is currently the CEO of Arkys Web Software, specialized in the mining industry. M. Beauchesne has a solid experience with junior mining companies and has acted as a director and member of the audit committee of Vanstar Mining Resources Inc. from 2015 to 2020. He is also a director and a shareholder of Geotic, a company specializing in the development of geology software for well-known exploration and mining companies in the industry. He played an active role in the management committee and in the development of Geotic's business. Mr. Beauchesne is a director and shareholder of TMR Communications, a specialized marketing communications firm whose main client base is mining.



**Jean Rainville**  
**Director**

Mr. Rainville has over 40 years of experience in the mining industry and financial markets. From 2008, his principal occupation was President and CEO of Blackrock Metals Inc. In 2018, Mr. Rainville ceased to serve as CEO, while retaining his position as President until late 2019, at which time he became a consultant. Previously, Mr. Rainville worked as an engineer, a fund manager and a director of corporate finance and has also served as a director or advisor for several public companies including Bonterra Resources Inc (TSX-V : BTR) and Fokus Mining Inc. (TSX-V: FKM). He holds bachelor's degrees in Mining Engineering and Commerce, both from McGill University.



**Jonathan Hamel**  
**Director**

Mr Hamel is President and CEO of Bullion Gold Resources Corporation (TSX-V : BFD). He was a director at Vanstar from 2018 to 2021, Secretary of the Board since 2020 and acted as Interim President and CEO during management transition in 2020. In addition to his 20 years of management experience that has taken him around the world, Mr. Hamel sat on the Board of Directors at the Montreal Economic Institute, a globally recognized independent public policy think tank focused on proposing reforms based on market principles and entrepreneurship and acted as Guest Lecturer at École des dirigeants – HEC Montréal. Mr Hamel served on the Financial Innovation Committee of L'Autorité des Marchés Financiers (Québec) from January 2017 to December 2020.





# CONTACT US

Mosaic Minerals Corporation

410, rue Saint-Nicolas, suite 236

Montréal (Québec)

Canada, H2Y 2P5

[www.mosaicminerals.ca](http://www.mosaicminerals.ca)

514-907-9016

[info@mosaicminerals.ca](mailto:info@mosaicminerals.ca)

Connect with us on

