



MOSAIC
MINERALS CORP

CSE: MOC

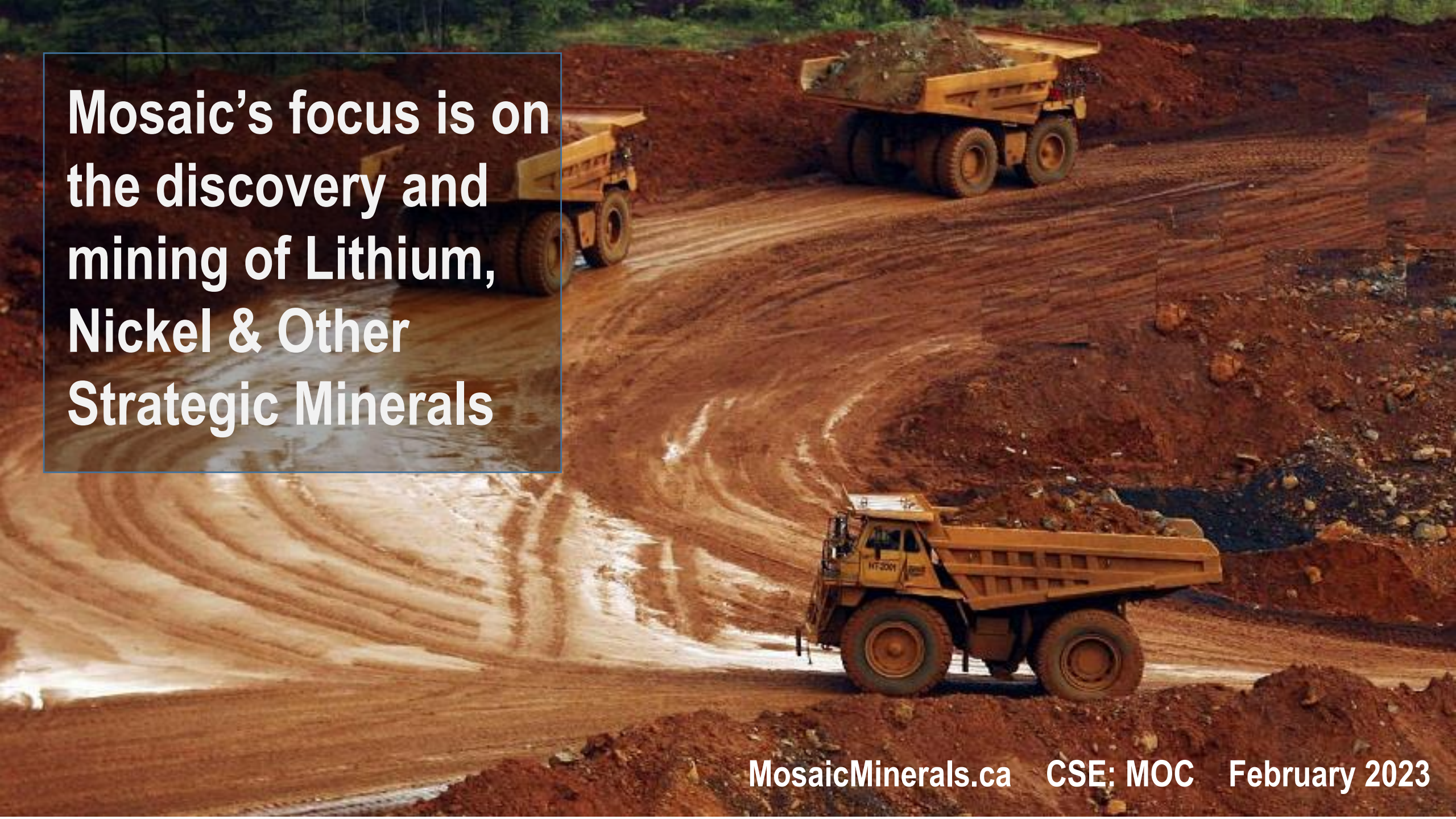
**58,000+ Hectares of Lithium &
Nickel Mining Claims in
Quebec, Canada**

June 2023

CAUTIONARY STATEMENT

CAUTIONARY STATEMENT REGARDING FORWARD-LOOKING INFORMATION

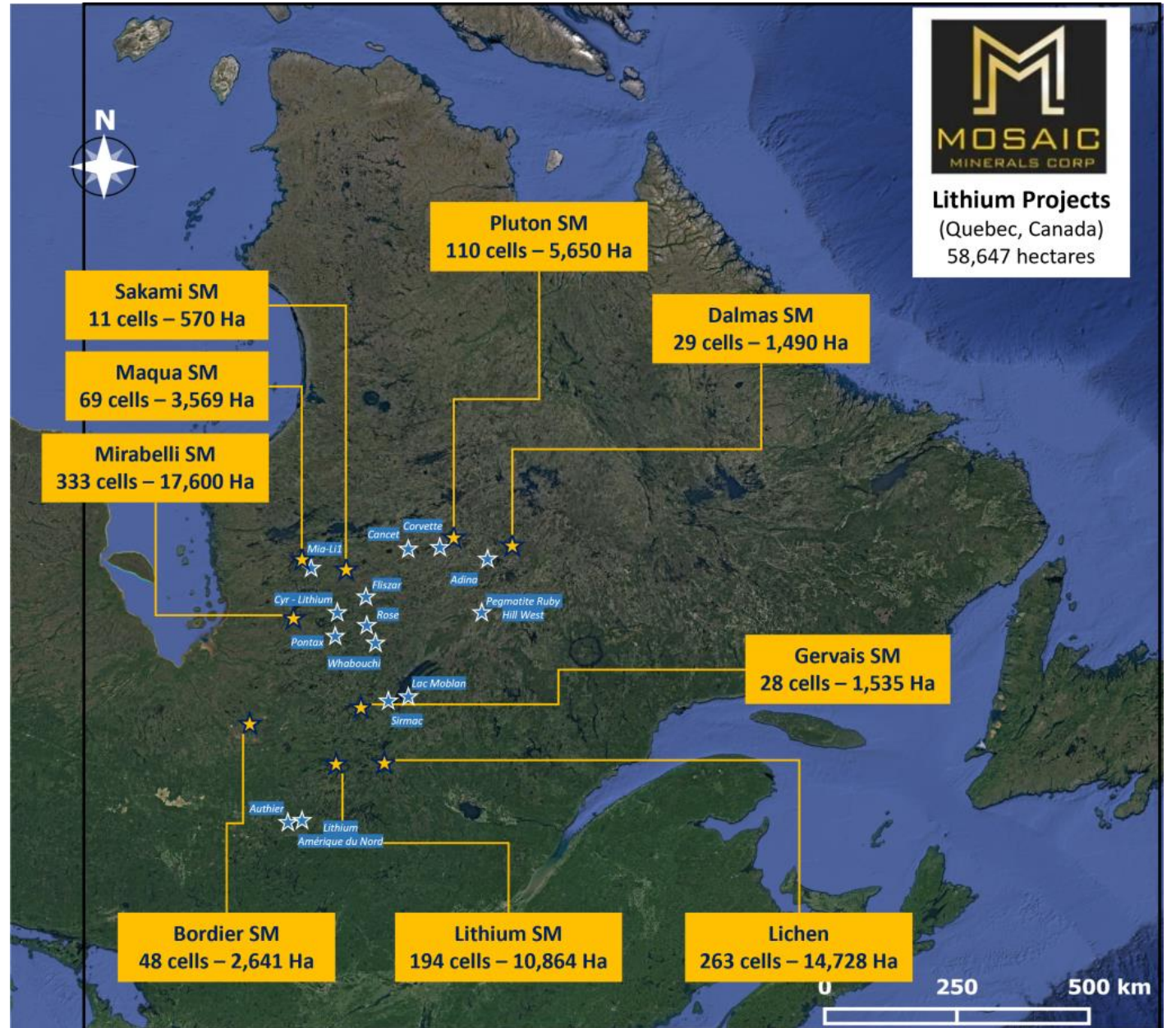
Except for historical information certain statements included in this presentation are forward-looking statements within the meaning of Canadian securities laws. Such statements may include words such as “Anticipates”, “schedule”, “projects”, “plans”, “targets”, “programs”, “continues”, “estimates”, “could”, “should”, “would” or “will”. Forward-looking statements made in this presentation involve significant risks and uncertainties. These risks and uncertainties include the inherent risks involved in the exploration and development of mineral properties. the uncertainties involved in interpreting drilling results and other geological data. fluctuating metal prices. the possibility of project cost overruns or unanticipated costs and expenses. uncertainties relating to the availability and costs of financing needed in the future. and other factors. The Corporation disclaims any intention or obligation to update forward-looking statements if circumstances or management’s estimates or opinions should change. The reader is cautioned not to place undue reliance on forward-looking statements.



**Mosaic's focus is on
the discovery and
mining of Lithium,
Nickel & Other
Strategic Minerals**

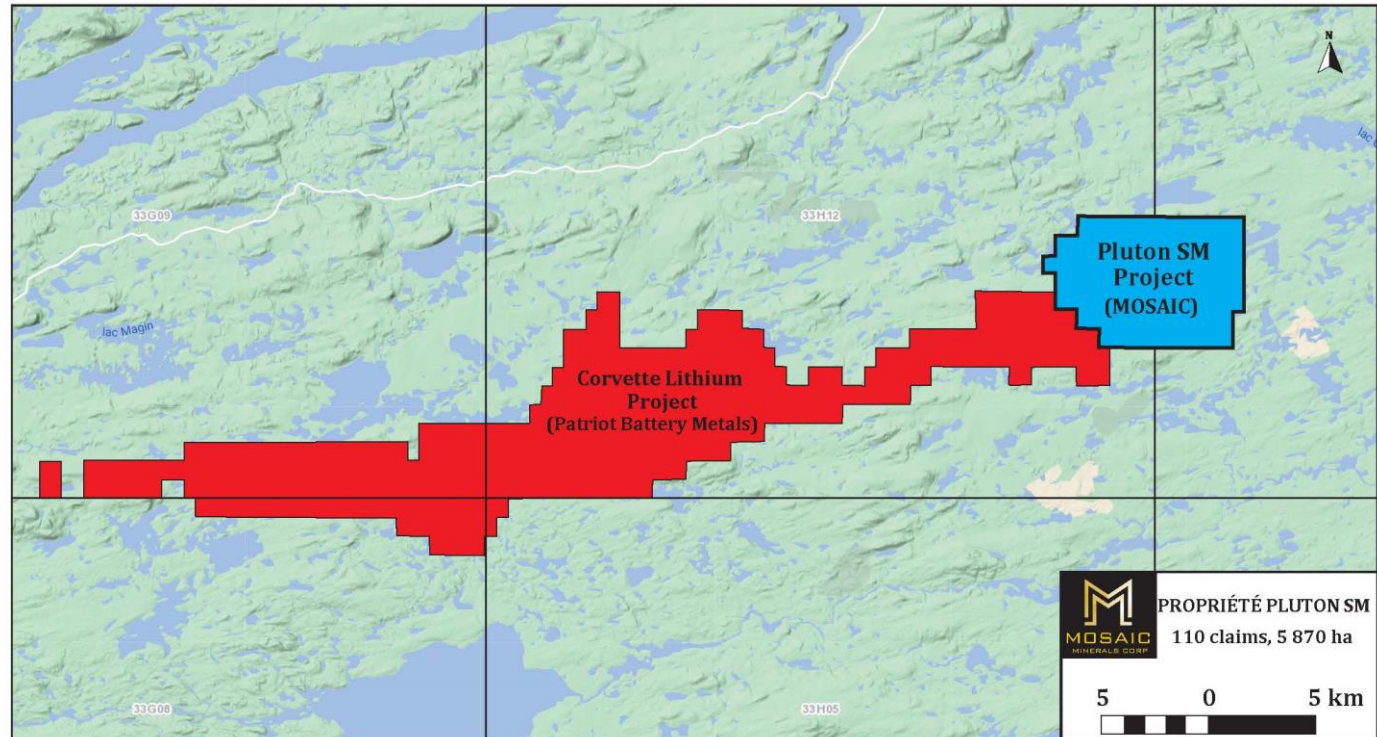
Lithium Projects

- ❖ 58,000+ Hectares (9 projects)
- ❖ All 100% owned by Mosaic
- ❖ Near QC Major Lithium Projects :
 - ❖ Corvette (PMET)
 - ❖ Mia (QTWO)
 - ❖ Adina (Winsome Resources)
 - ❖ James Bay (Allkem)
 - ❖ Moblan (Sayona)
- ❖ Exploration Campaign planned for Summer 2023



PLUTON SM LITHIUM PROJECT

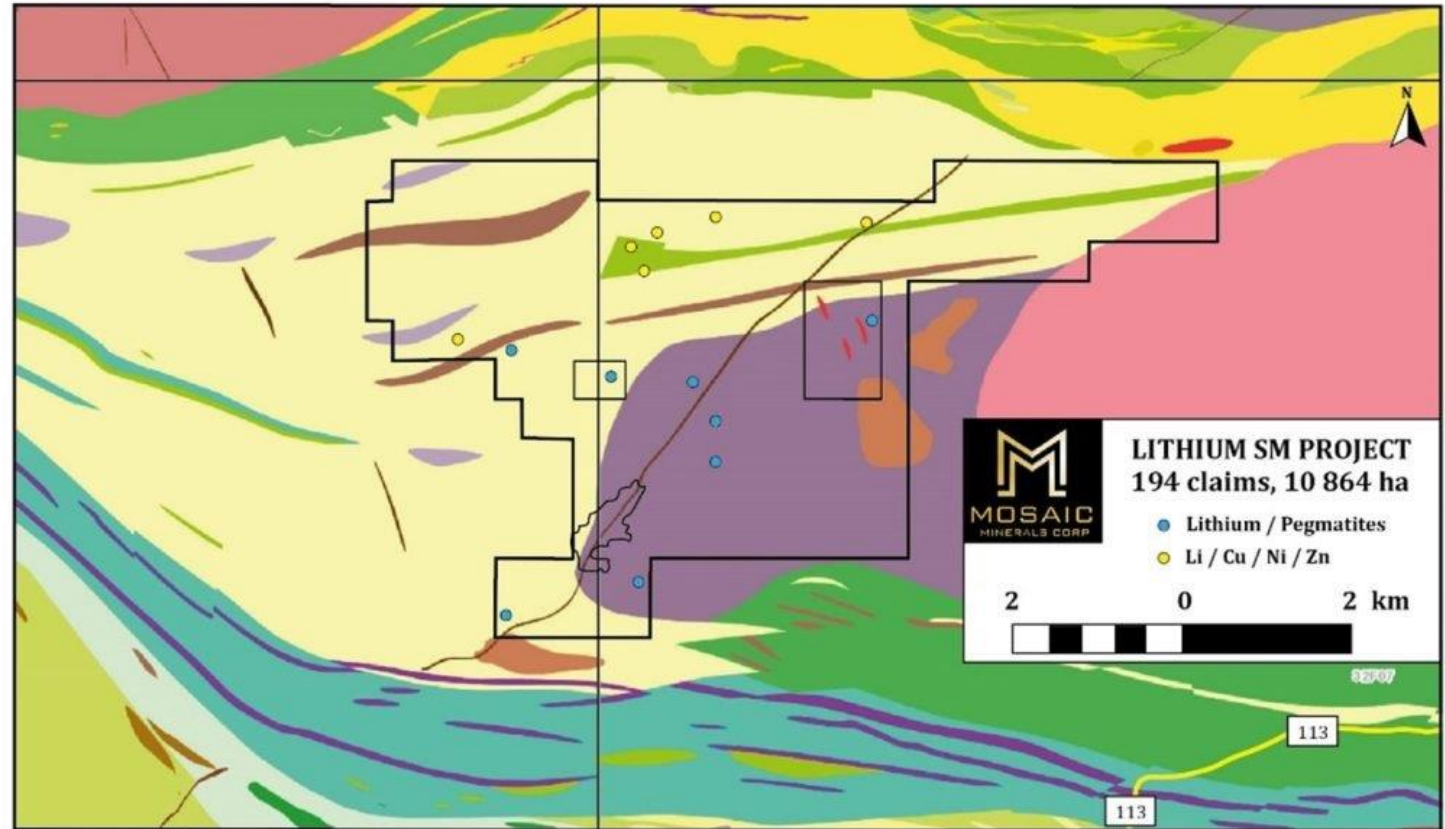
- 110 claims – 5,870 Ha.
- Located on the eastern edge of Patriot Battery Metals' Corvette Lithium Project
- Occurrence of biotite-muscovite granite on the property
- Occurrence of pegmatite associated to an ENE-trending structure to the NE of the property
- Several outcrops of felsic intrusion never assayed for Li
- Follow-up on lake sediment LiCs anomalies and strong focus on ENE fault zone corridor and associated intrusions



[Locate the project on Junior Mining Hub Interactive Map](#)

LITHIUM SM PROJECT

- 194 claims – 10,864 Ha.
- Located 40 km north of the Quévillon mining area. This project is easily accessible by forest and secondary roads connecting Quévillon to Matagami
- A vast granitic batholith in contact with volcanics containing several pegmatites with lithium anomalies (rock samples-MERN) ranging from 50 to 299 PPM in Li and 330 PPM in Rb as well as anomalies in tantalum and tin have been identified by historical exploration.
- Extensive exploration program planned for summer 2023

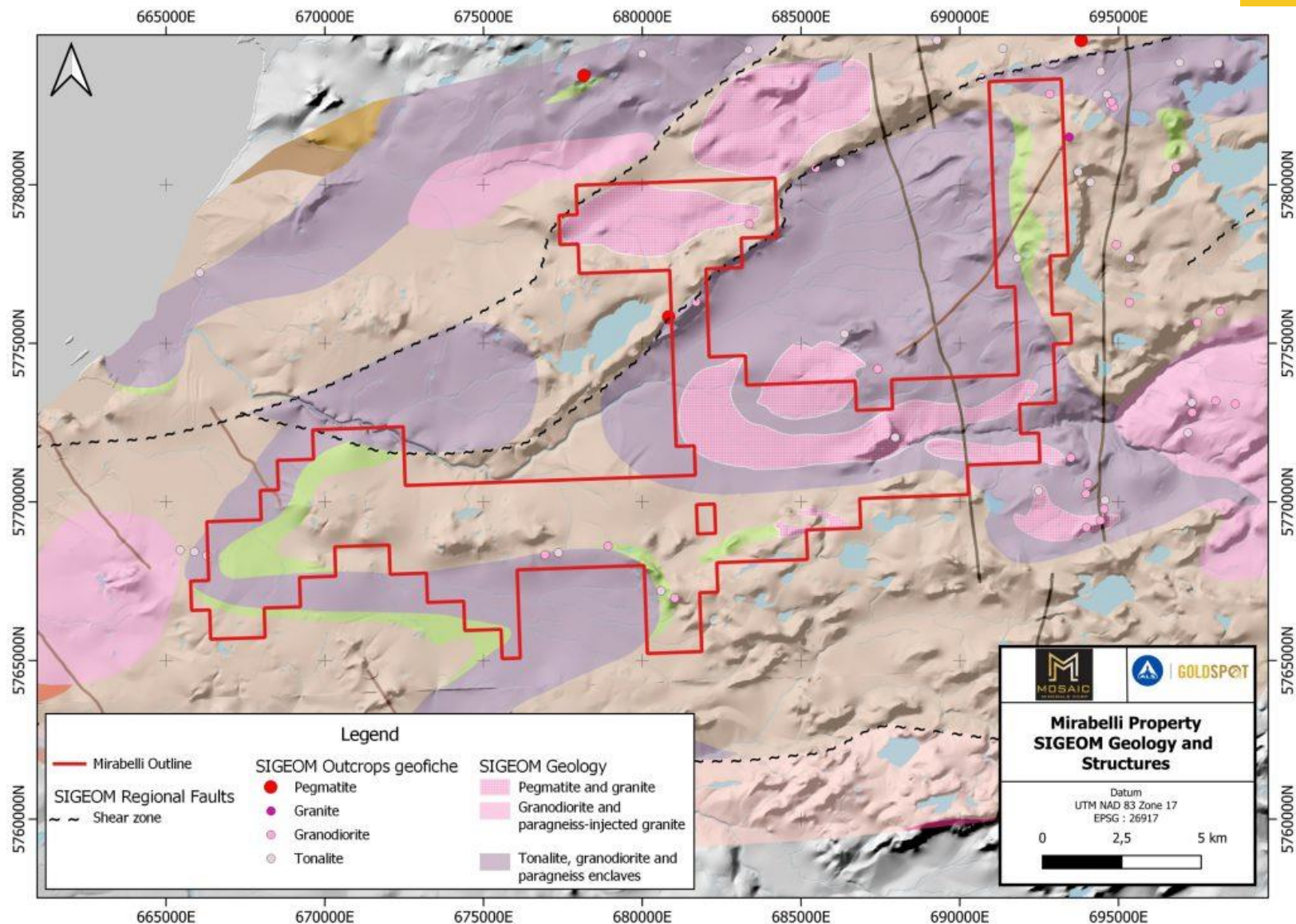


[Locate the project on Junior Mining Hub Interactive Map](#)

MIRABELLI SM PROJECT

- 290 claims – 15,370 Ha.
- Accessible by the main road leading to Eastmain.
- Located to the west and south of the band of green rock containing the James Bay Lithium deposit (Allkem – 37M tm @ 1,3% Li (2021)).
- Favorable geological environment for the presence of spodumene pegmatites. Several pegmatites containing biotite, muscovite, beryl, and tourmaline have already been listed by the MERN.
- This project will also be the subject of a vast exploration campaign in Summer 2023.

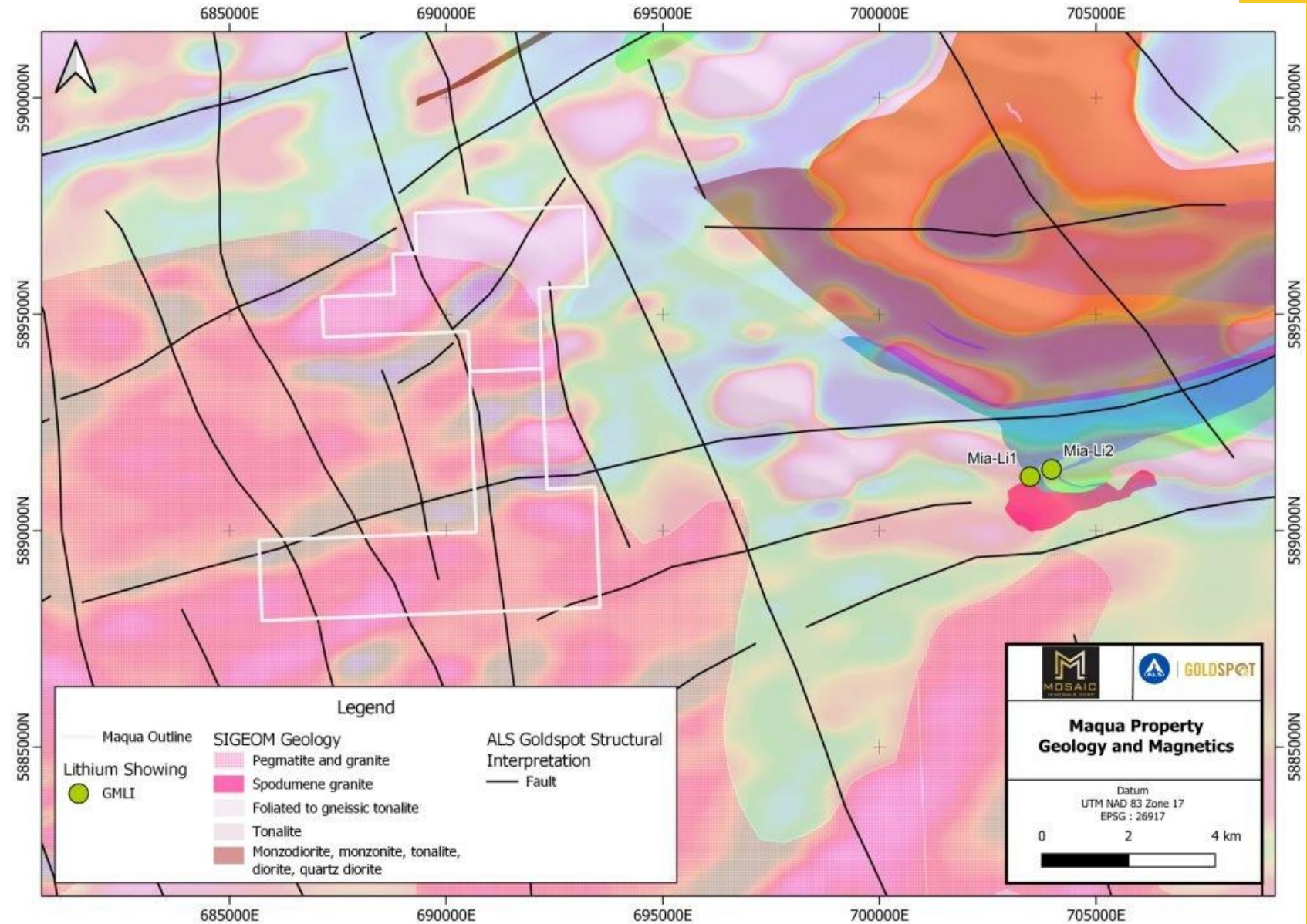
[Locate the project on Junior Mining Hub Interactive Map](#)



MAQUA PROJECT

- 69 claims – 3,571 Ha.
- Located to the west of the Mia Lithium Project ([Q2 Metals](#)) in a pegmatite granite of the Vieux Comptoir Suite where the MERN has found numerous indications of lithium (rock samples)
- Accessible by the main road leading to Wemindji

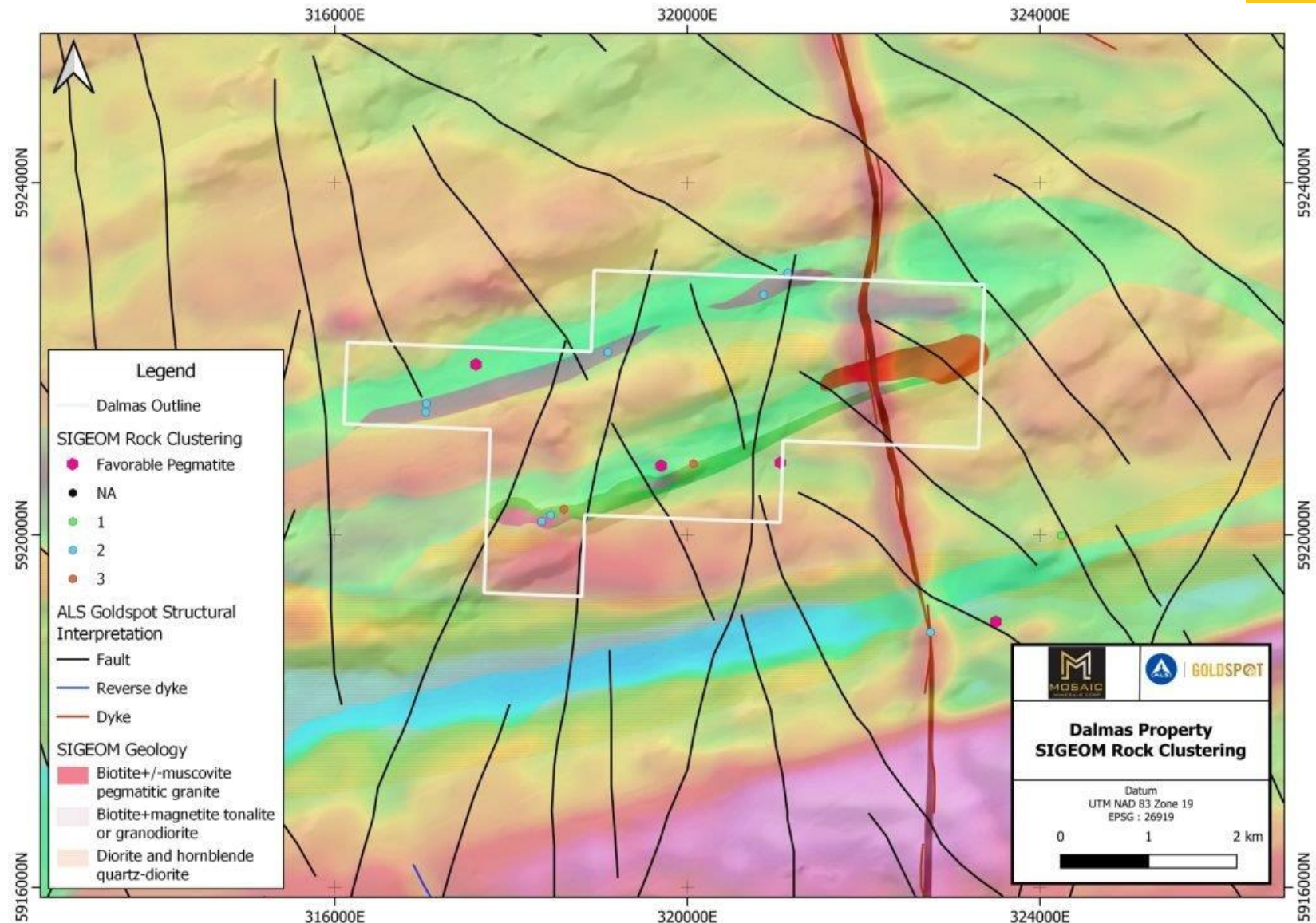
[Locate the project on Junior Mining Hub Interactive Map](#)



DALMAS SM PROJECT

- 29 claims – 1,490 Ha.
- East of Adina Lithium Project ([Winsome Resources](#))
- Located in a favorable geological environment for strategic minerals such as lithium, nickel, copper, chromium, and cobalt.
- Presence of peridotite, pyroxenite as well as a pegmatitic granite containing beryl. According to data from the Quebec Ministry of Energy and Natural Resources, this property contains several geochemical showings of nickel, copper, and lithium.

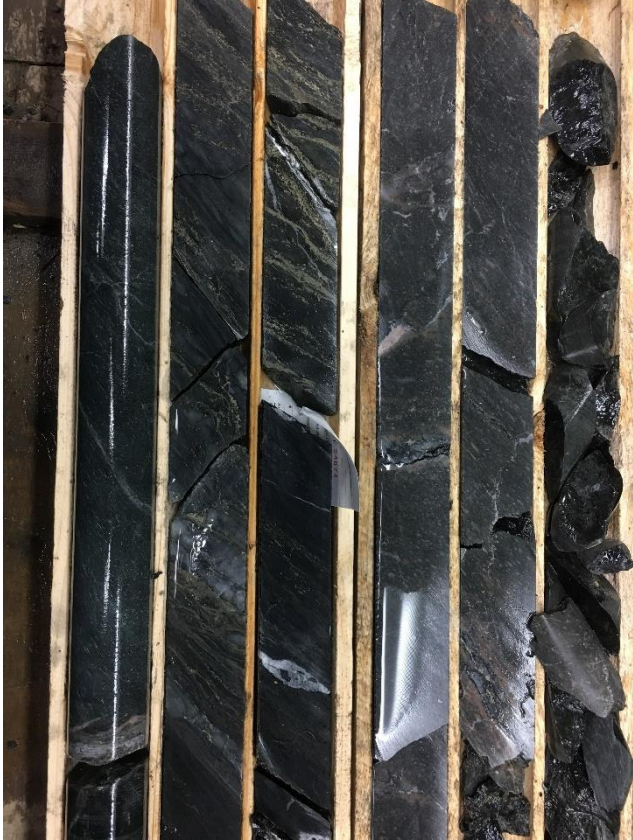
[Locate the project on Junior Mining Hub Interactive Map](#)





Gaboury Nickel Project

Gaboury Project Highlights



The Gaboury Project is composed of 114 mining claim cells totaling 6,064 hectares located approximately 150 km SW of the Rouyn-Noranda mining camp and easily accessible by paved and gravel roads and 11 km East of former Loraine Mine that produced 600,000 tonnes of ore grading 0.47% Ni and 1.08% Cu (Source: SIGEOM GM 43679).

Nickel, Copper & Gold occurrences were discovered in this geological environment near the project. **The company carried out a 1,500m drilling program in Q4 2021 and is planning an additional 5,000m in 2022.**

Best Drilling Results

GA-21-01 **122.9m @ 0.21% Ni & 72 ppm Co**
Including **70.9m @ 0.25% Ni & 83 ppm Co**

GA-21-07 **165m @ 0.26% Ni & 73 ppm Co**
Including **121.5m @ 0.32% Ni & 91 ppm Co**

Historical Drilling Results

GA-10-01 **87.7m @ 0.20% Ni**

GA-11-06 **84m @ 0.20% Ni**

GA-11-08 **81m @ 0.20% Ni**

Pike Nickel West

- GA-21-08: 0,17% Ni over 131.8 m**
- Including : 0,31% Ni over 13,5 m
- 0,26% Ni over 16.8 m
- 0,23% Ni over 18.2 m
- GA-21-07 : 0,26% Ni over 165 m**
- Including 0,32% Ni over 121.5
- Including : 0,40% Ni over 15 m
- GA-22-09 0,13% Ni over 28,6 m**
- And 0,18% Ni over 46,5 m *
- GA-22-10 0,23% Ni over 120 m**
- And 0,25% Ni over 17,6 m*
- GA-22-11 0,26% Ni over 27,5 m**
- GA-23-12 0,16% Ni over 15 m**
- And 0,21% Ni over 6 m
- And 0,17% Ni over 12 m
- And 0,18% Ni over 39 m
- GA-23-13 0,23% Ni over 159,5 m**
- Including 0,25% Ni over 96,5 m
- Including 0,26% Ni over 51 m
- GA-23-14 0,13 % Ni over 31,5 m**

*** Note those holes finished in Ni zone so this not represent for now the true width and Ni grade.**

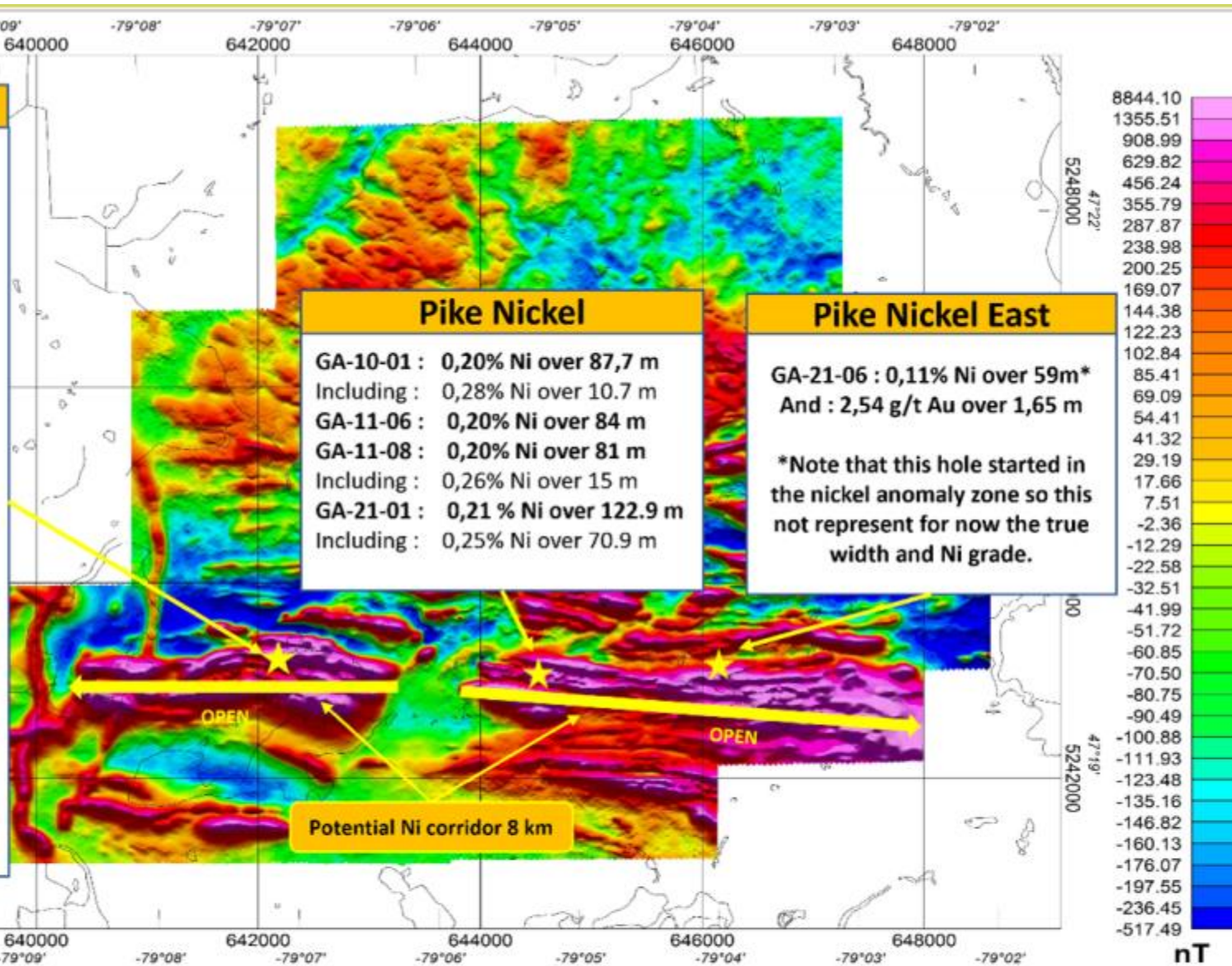
Pike Nickel

- GA-10-01 : 0,20% Ni over 87,7 m**
- Including : 0,28% Ni over 10.7 m
- GA-11-06 : 0,20% Ni over 84 m**
- GA-11-08 : 0,20% Ni over 81 m**
- Including : 0,26% Ni over 15 m
- GA-21-01 : 0,21 % Ni over 122.9 m**
- Including : 0,25% Ni over 70.9 m

Pike Nickel East

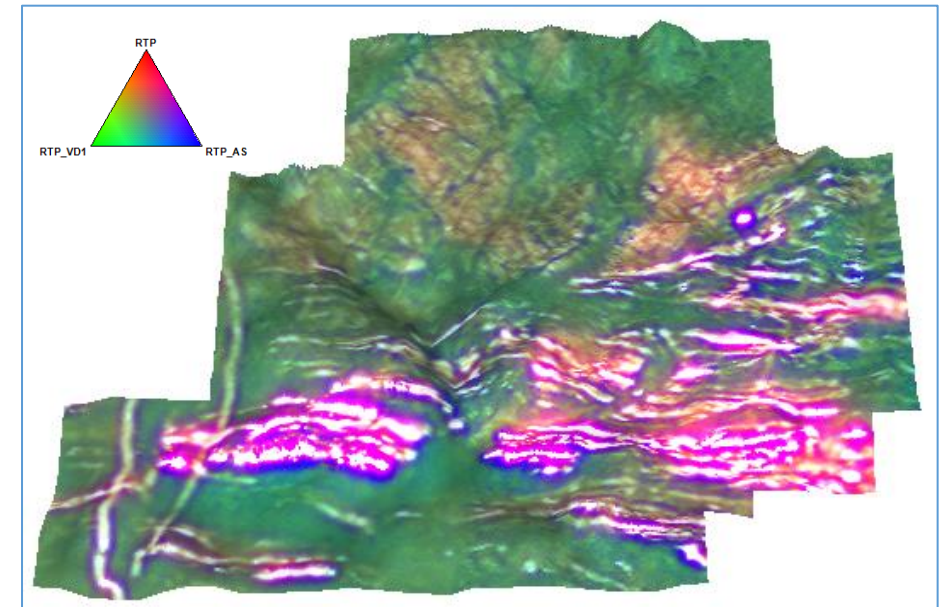
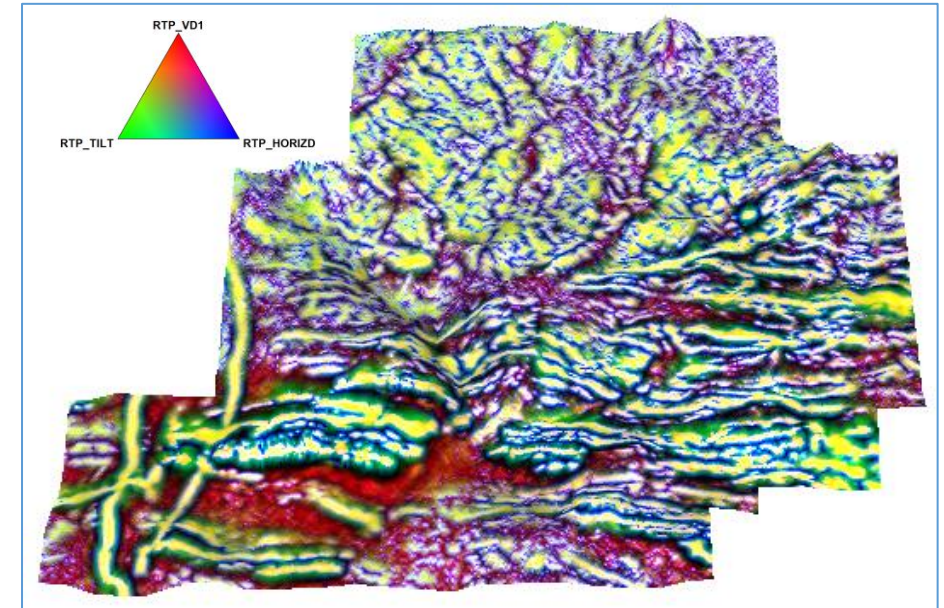
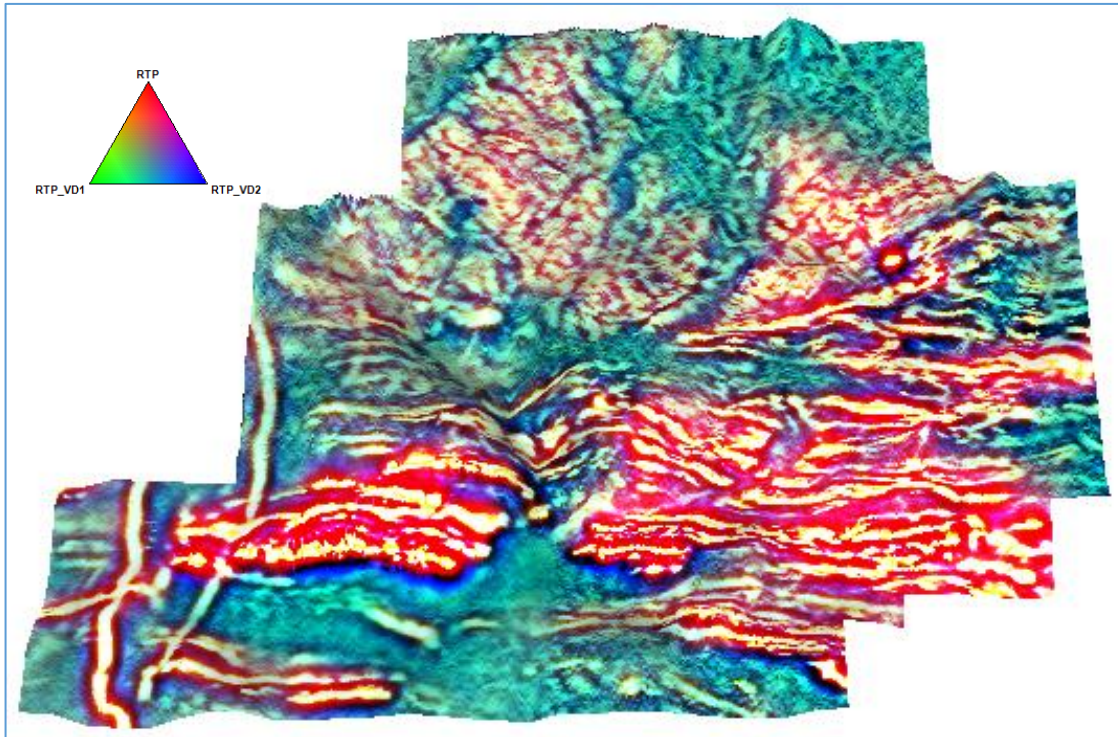
- GA-21-06 : 0,11% Ni over 59m***
- And : 2,54 g/t Au over 1,65 m**

***Note that this hole started in the nickel anomaly zone so this not represent for now the true width and Ni grade.**



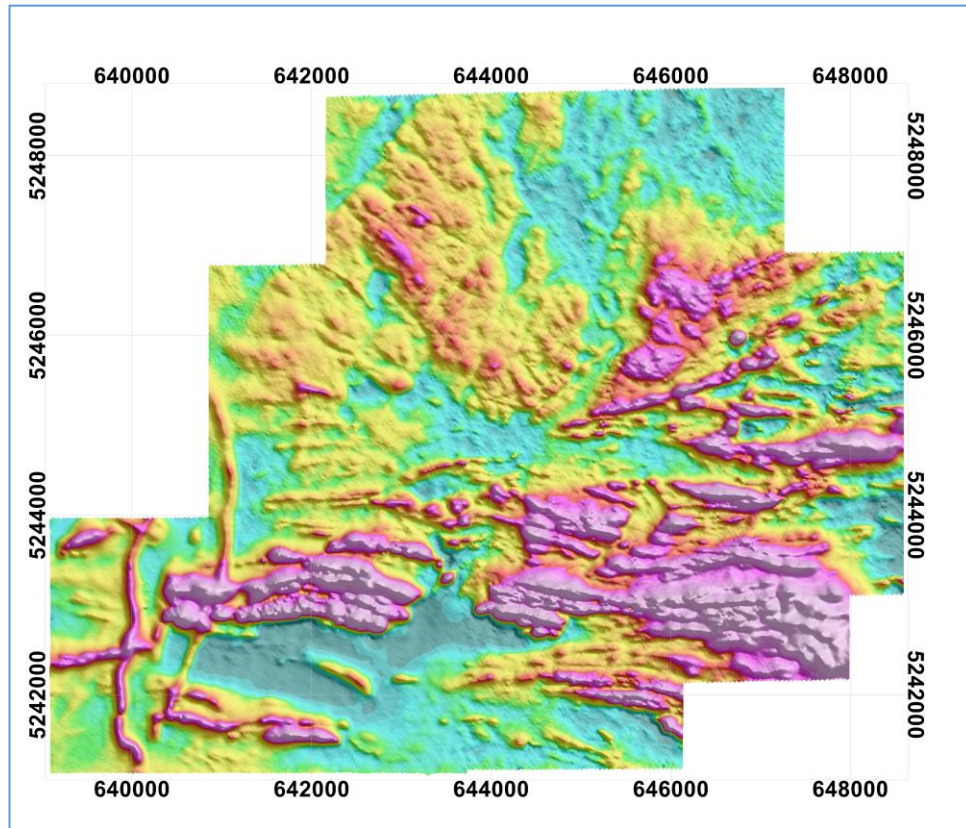
Magnetic Ternary Images

- Magnetic ternary images are utilized to help define lithologic boundaries and structures

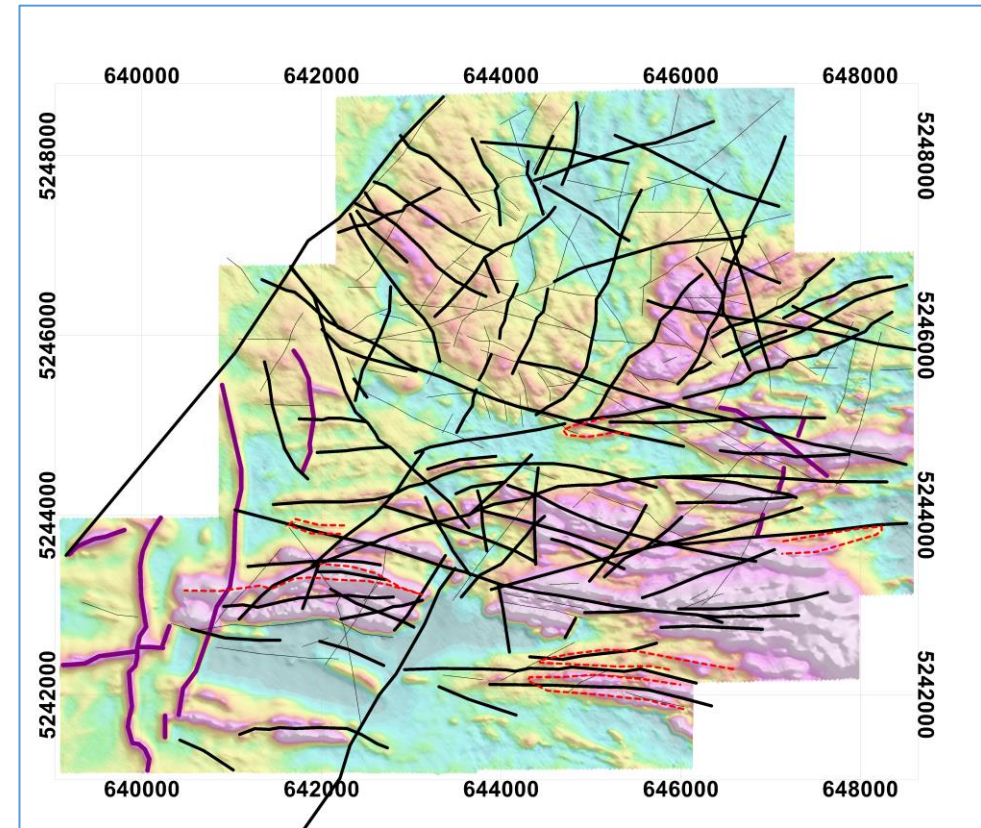


Ternary images clockwise from top:
 1st vertical derivative of the RTP/tilt derivative of the RTP/horizontal derivative of the RTP
 RTP/1st vertical derivative of the RTP/Analytic Signal of the RTP
 RTP/1st vertical derivative of the RTP/2nd vertical derivative of the RTP





Magnetic Structural Interpretation



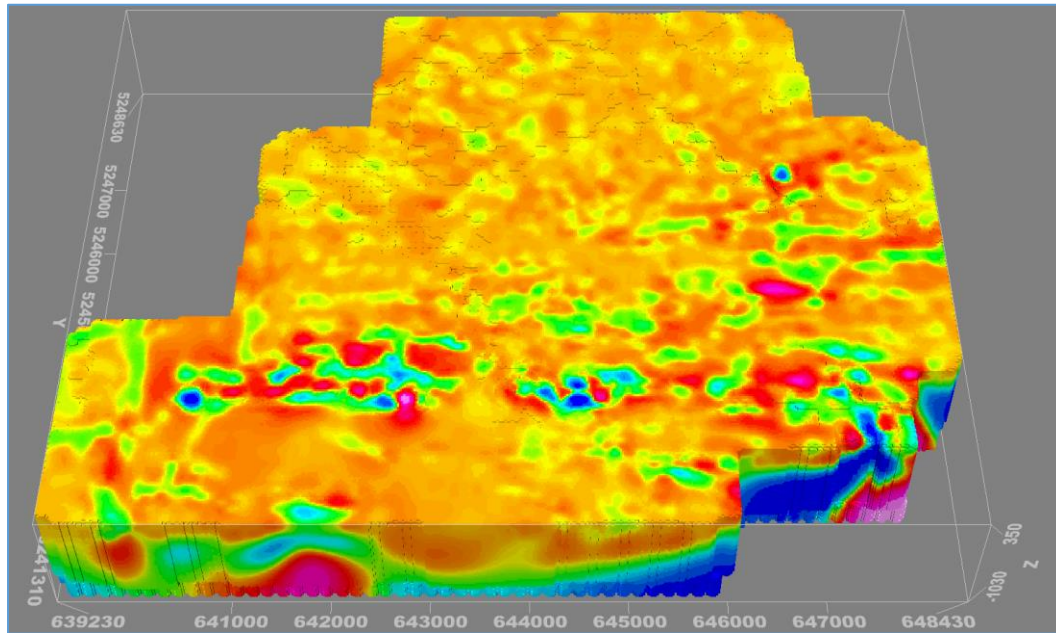
Gaboury Assemblage RTP



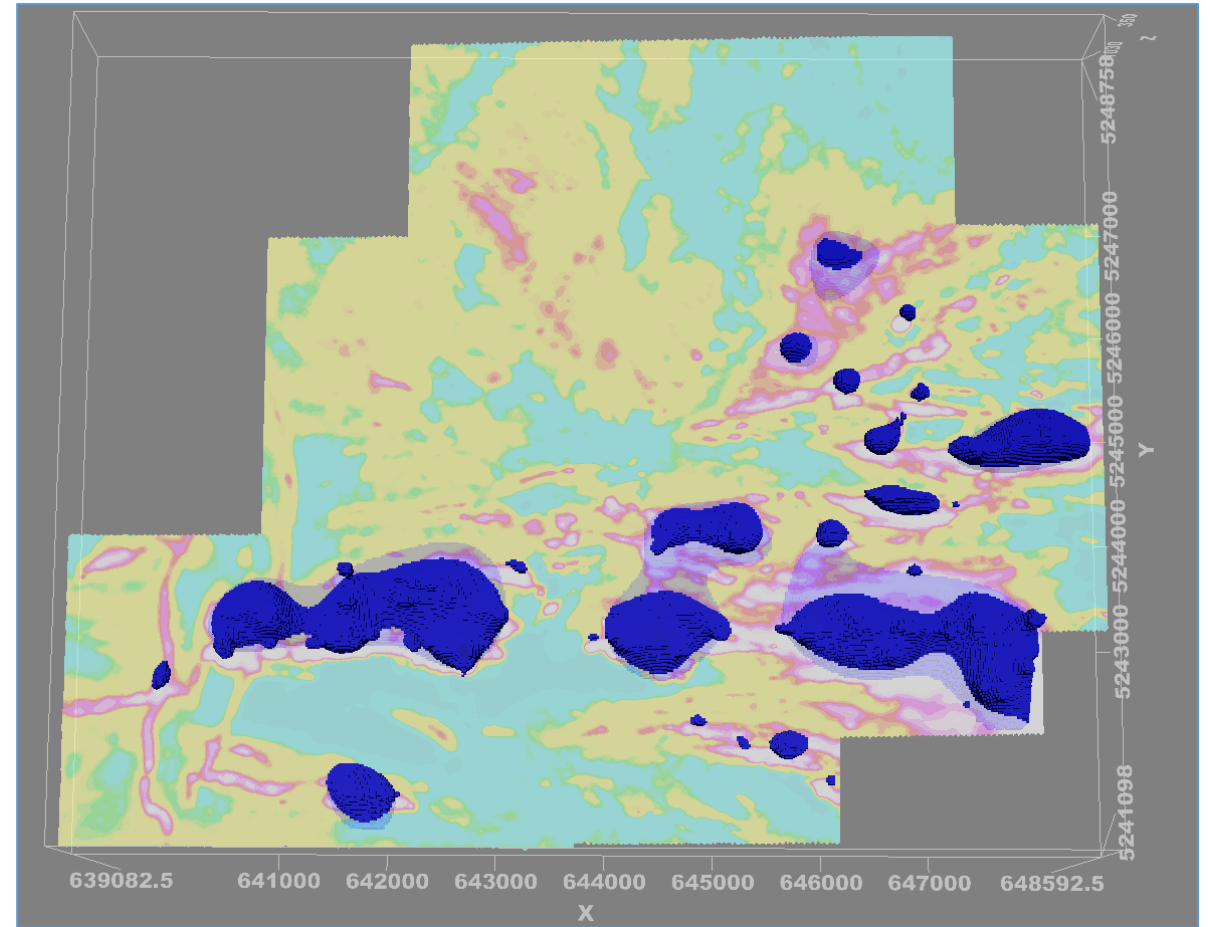
Gaboury Assemblage RTP and geophysical interpretation linework

-  **Dykes**
-  **Strong structures (faults/contacts)**
-  **Weaker structures (faults/contacts)**
-  **Possible folds – if these folds exist, then any interpreted structure centred within these would then be the fold axis**

Magnetic Inversion – coarse scale – 20m



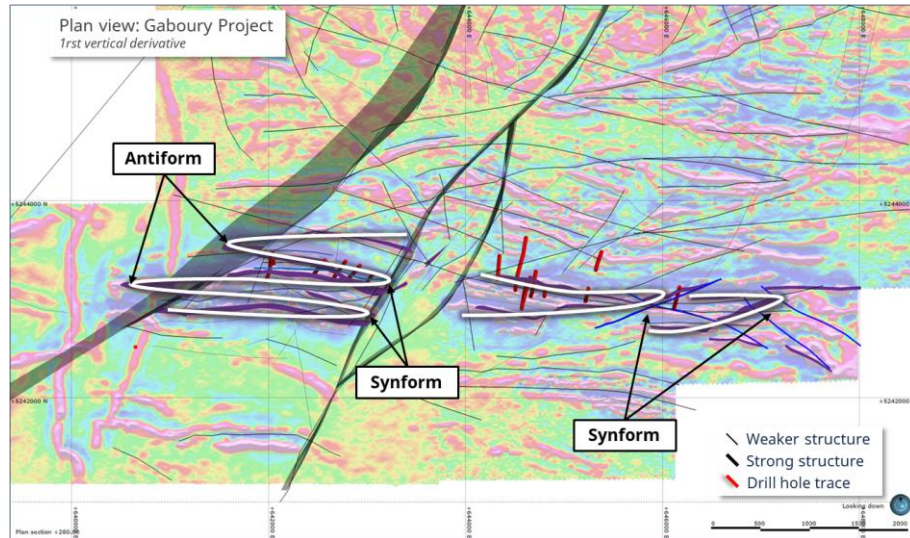
20m cell magnetic inversion



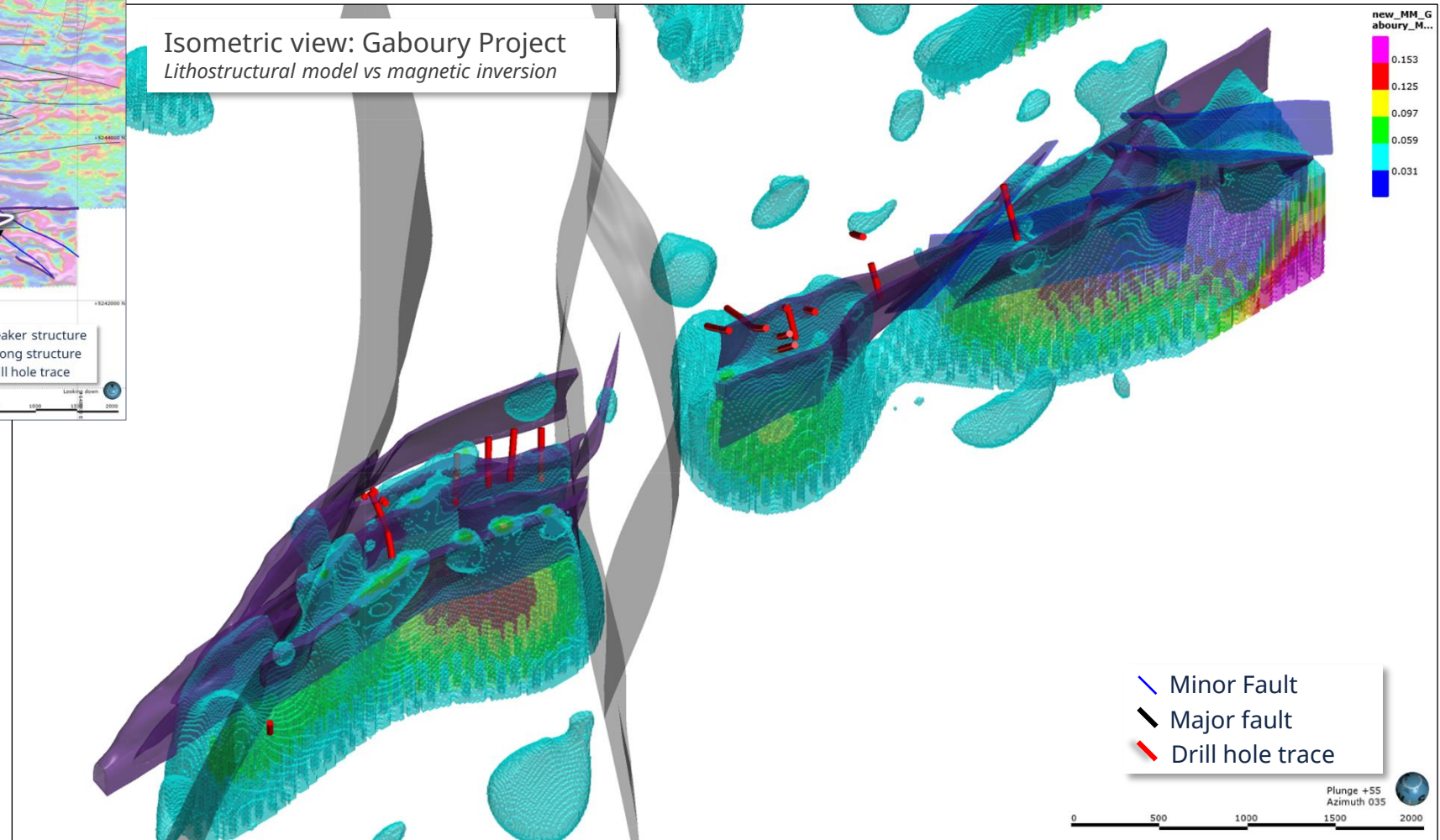
20m cell magnetic inversion – lower limit of 0.032, displayed over the Gaboury Assemblage RTP

3D geological and structural model

Litho model



Isometric view: Gaboury Project
Lithostructural model vs magnetic inversion



STOCK INFORMATION

CSE : MOC

Capital structure as of June 2023

- Common Shares Outstanding : 68,758,071
- Warrants : 6,306,500
- Options: 4,900,000
- Fully Diluted: 79,964,571
- 52 weeks : \$0.045 / \$0.255



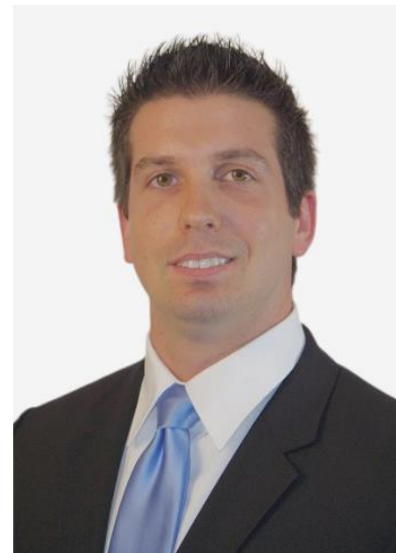
BOARD OF DIRECTORS



Luc Gervais, Eng.

Director

Mr Gervais holds a mining engineering degree from Laval University and is a member of the Ordre des Ingénieurs du Québec (OIQ). M. Gervais has 35 years of experience in engineering, construction and maintenance in the mining and metallurgy sectors and has held several management positions in metallurgy departments for different producers. He has led studies for numerous mining companies and worked on various projects in Canada and abroad. In addition, he currently sits on the board of Vanstar Mining Resources, a Quebec-based junior exploration company.



Charles Brulotte, CFA.

Director

Charles Brulotte is a capital markets professional with over 10 years of experience in various Canadian and global financial institutions. Mr. Brulotte has developed an extensive knowledge of corporate finance, investment analysis and asset valuation during his years in banking and institutional portfolio management. Since 2017, Mr. Brulotte has been working as an institutional equity salesperson at Macquarie Capital Markets Canada Ltd and Laurentian Bank Securities Inc during which time he developed a strong interest in the mining sector while also developing an extensive network of relationships with institutional investors located across North America and Europe. Mr. Brulotte is a Chartered Financial Analyst and holds a Bachelor of Business Administration and Master's Degree in Finance from Laval University in Quebec, Canada..



Eric Beauchesne

Director

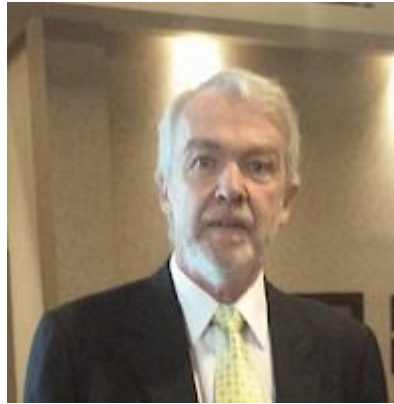
Mr Beauchesne holds a Master in Business Administration (MBA) with a mining specialization. He is currently the CEO of Arkys Web Software, specialized in the mining industry. M. Beauchsne has a solid experience with junior mining companies and has acted as a director and member of the audit committee of Vanstar Mining Resources Inc. from 2015 to 2020. He is also a director and a shareholder of Geotic, a company specializing in the development of geology software for well-known exploration and mining companies in the industry. He played an active role in the management committee and in the development of Geotic's business. Mr. Beauchesne is a director and shareholder of TMR Communications, a specialized marketing communications firm whose main client base is mining.

MANAGEMENT



Jonathan Hamel President & Chief Executive Officer Interim CFO

Mr Hamel is President and CEO of Bullion Gold Resources Corporation (TSX-V : BFD). He was a director at Vanstar from 2018 to 2021, Secretary of the Board since 2020 and acted as Interim President and CEO during management transition in 2020. In addition to his 20 years of management experience that has taken him around the world, Mr. Hamel sat on the Board of Directors at the Montreal Economic Institute, a globally recognized independent public policy think tank focused on proposing reforms based on market principles and entrepreneurship and acted as Guest Lecturer at École des dirigeants – HEC Montréal. Mr Hamel served on the Financial Innovation Committee of L’Autorité des Marchés Financiers (Québec) from January 2017 to December 2020.



Gilles Laverdière, P. Geo. Qualified Person under NI 43-101

Gilles Laverdière is a consulting geologist to exploration mining companies, since 2013. From 2011 to 2013, he was senior consulting geologist for Merrex Gold Inc. where he was in charge in developing a gold project in Mali within a joint-venture with lamgold Inc. From 2006 to 2010, he was a consulting geologist in charge of planning and supervising drilling projects in Northwestern Quebec and writing 43-101 geological reports. From 1998 to 2006, he was CEO of HMZ Metals Inc. where he acquired mining assets in China and listed the Company through an IPO on the TSX. From 1985 to 1997, he has been part of senior management and on the Board of many public mining companies where he evaluated mining prospects, negotiated and structured financing for various mining companies in Canada, the Philippines, Brazil, Nevada. From 1978 to 1984, he was a geologist with a focus on gold exploration in Northwestern Quebec



CONTACT US

Mosaic Minerals Corporation

410, rue Saint-Nicolas, suite 236

Montréal (Québec)

Canada, H2Y 2P5

www.mosaicminerals.ca

514-317-7956

info@mosaicminerals.ca

Connect with us on



[@MosaicMinerals](https://twitter.com/MosaicMinerals)

